



Aylward Road, SW20
£1,100,000

Dexters



Aylward Road, SW20

A 1930's house that has been extended to the back, the loft and is presented in excellent condition throughout! With four bedrooms, two bathrooms and beautiful views over playing fields

There's a separate reception room to the front, complete with a log burning fireplace. The rear of the house has the perfect open kitchen/dining room, complete with underfloor heating and sliding doors leading to the landscaped garden.

The first floor has three bedrooms, two of which are very generous doubles with built in wardrobes and there is a single bedroom to the front and a luxurious family bathroom to the rear. The loft has been converted to create a generous master bedroom, complete with en-suite shower room and eaves storage.

Outside, the garden has been landscaped with a patio perfect for entertaining and steps down to lawn,

Aylward Road is a quiet residential street, equidistant to both Wimbledon Chase and South Merton train stations. With the famous National Trust Morden Hall Park, Cannon Hill Common, and Wimbledon town centre just a short distance away.

Features

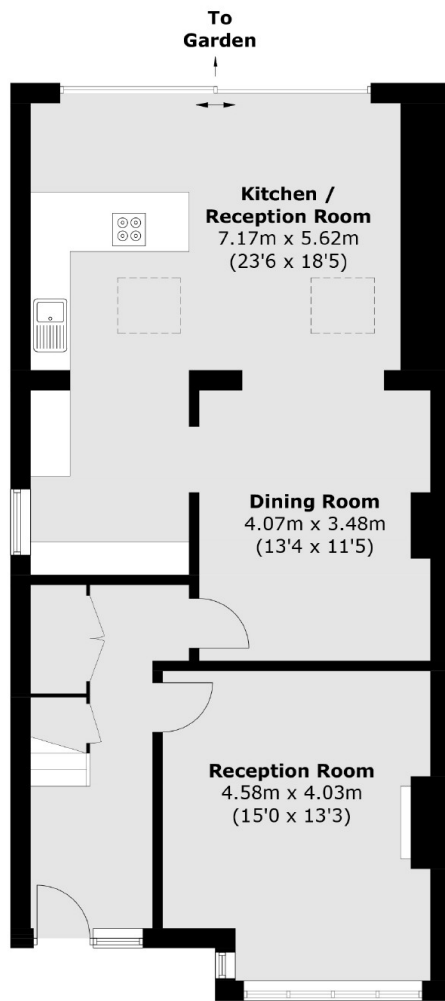
- Four Bedrooms
- Two Bathrooms
- Semi Detached
- Views Over Playing Fields
- Off Street Parking
- Exceptional Finish



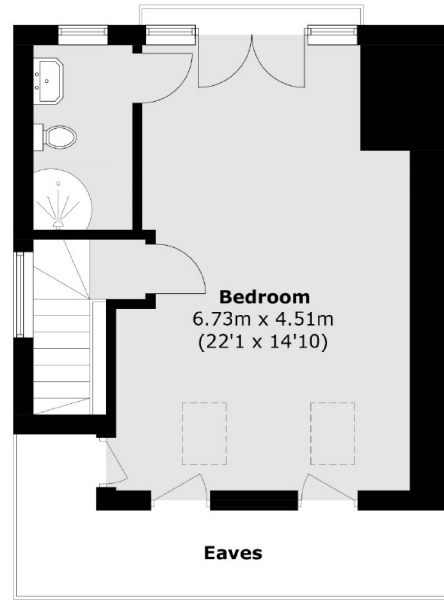




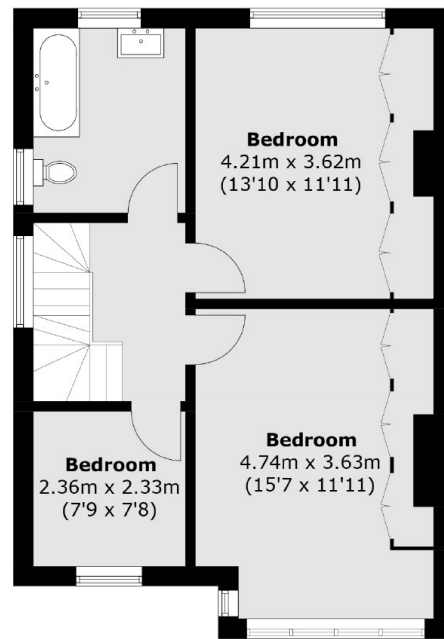
Aylward Road, London, SW20



Ground Floor



Second Floor



First Floor

Total area (approx.): 165.1 sq. m (1,777.1 sq. ft)
(Excluding Eaves)