



## Elm Grove, SW19

£2,600 Per calendar month

A recently built, ground floor, two bedroom apartment with a modern open plan living space and fully fitted kitchen, there is a bathroom with shower over bath and a private patio.

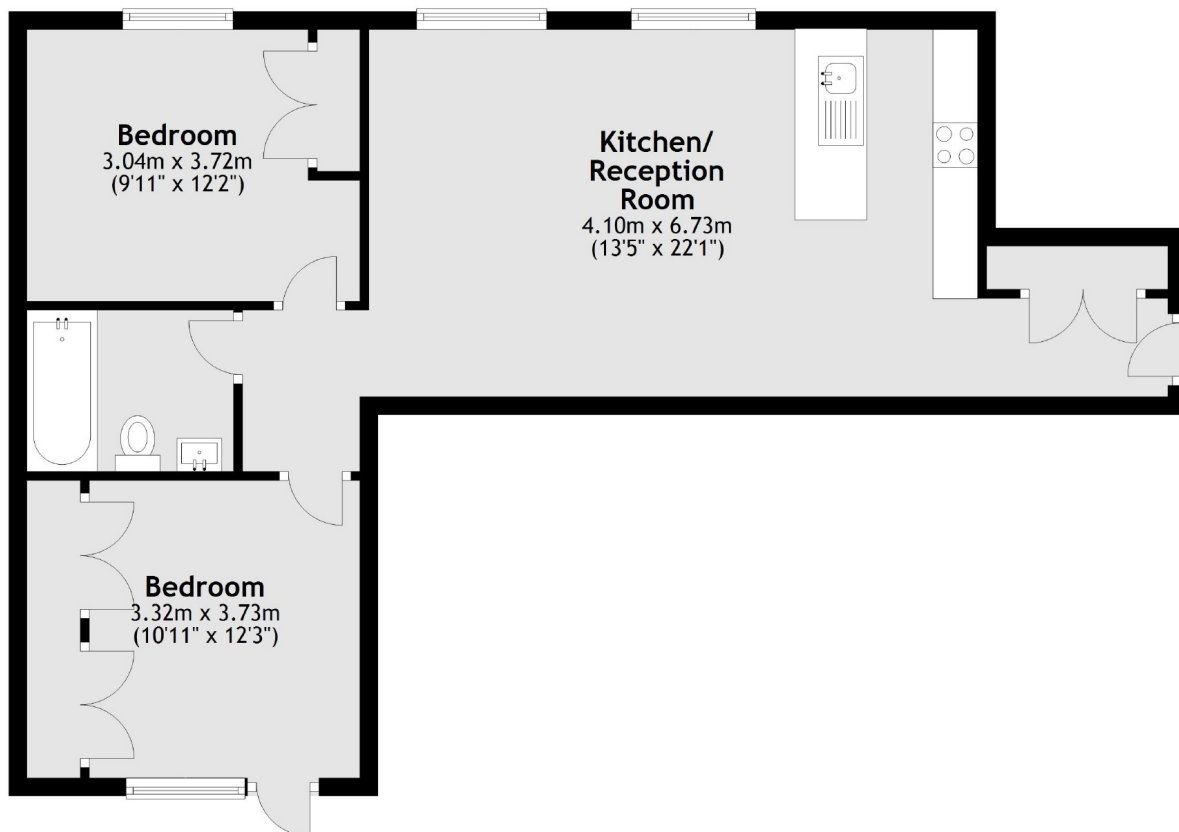
Watson Studios are located off Elm Grove. Elm Grove is cul-de-sac just over half a mile from Wimbledon Broadway and station allowing easy access to the town centre's restaurants and shops.

### Features

- Two Bedrooms
- One Bathroom
- Ground Floor
- Private Patio
- Roof Terrace
- Wooden Floors

# Elm Grove, London, SW19

## Ground Floor



Total area: approx. 63.0 sq. metres (677.7 sq. feet)