



Elm Grove, SW19

£2,800 Per calendar month

A recently built two double bedroom Townhouse, with a large open plan living room/kitchen, with a breakfast bar and integrated appliances, including dishwasher and wine chiller.

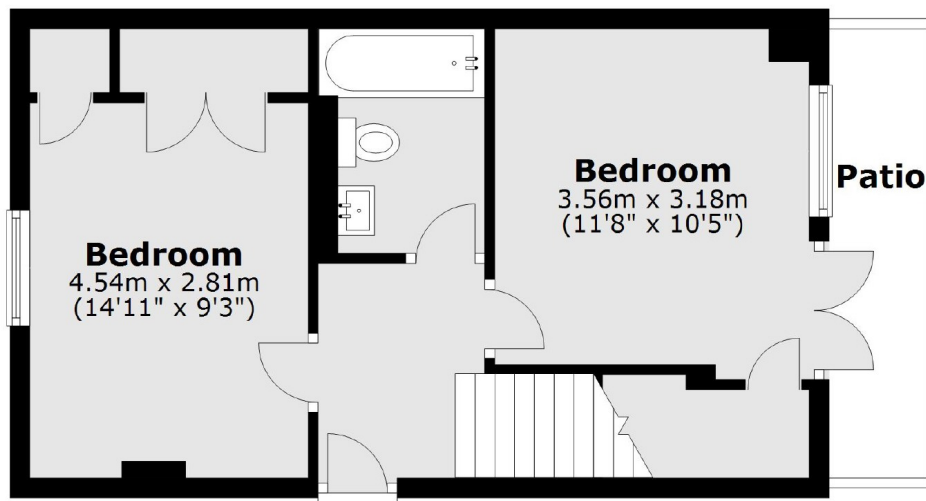
Cree Studios are located off Elm Grove. Elm Grove is cul-de-sac just over half a mile from Wimbledon Broadway and station allowing easy access to the town centre's restaurants and shops.

Features

- Two Bedroom House
- Wooden Flooring
- Open Plan Kitchen
- Plenty of Storage
- Private Decked Area
- Off Street Parking

Elm Grove,
London, SW19

Ground Floor



First Floor



Total area: approx. 70.3 sq. metres (756.7 sq. feet)