



Stanton Road, SW20

£350,000

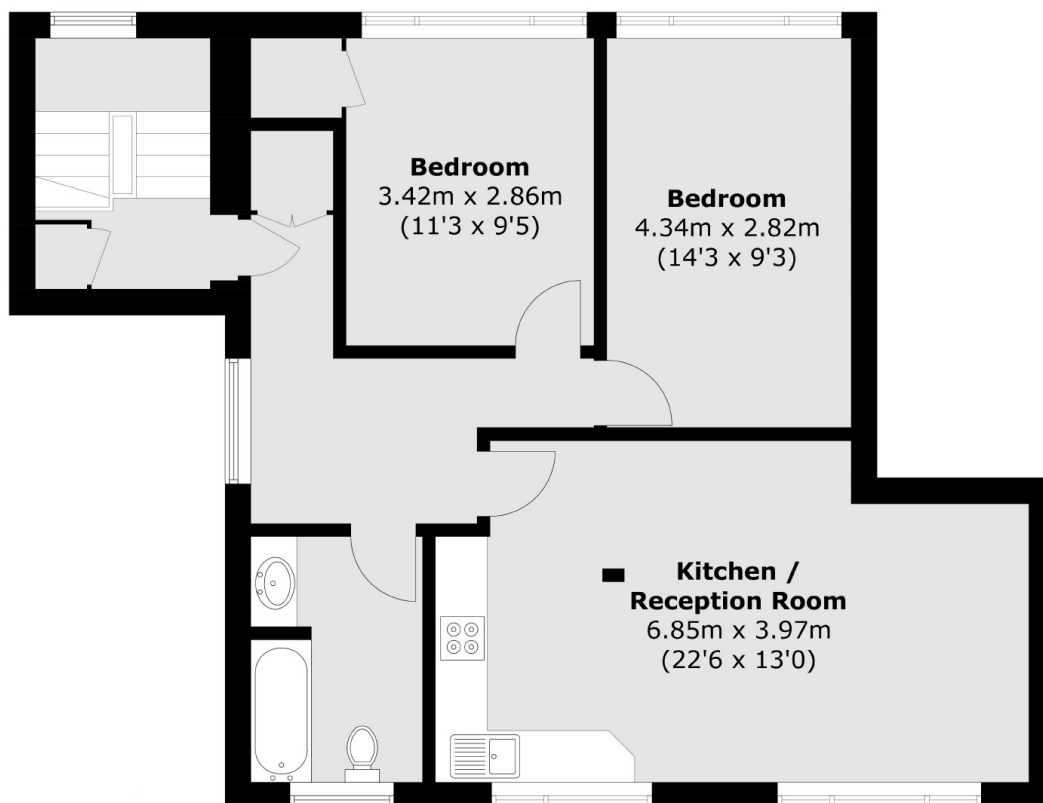
A two double bedroom, purpose built apartment complete with its own front door, communal gardens and spanning over 900 square feet. There is allocated parking, as well as visitors spaces available.

Stanton Road is a desirable residential street located within a short walk to Raynes Park and Wimbledon railway stations with their quick tube and overground links in to Central London. Hollymount Primary Schools is also close to hand.

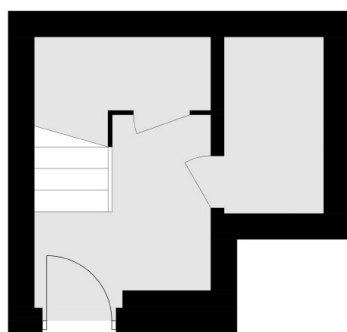
Features

- Two Double Bedrooms
- Communal Gardens
- Allocated And Guest Parking
- Huge Amounts Of Storage
- Over 900 Square Feet
- Own Front Door

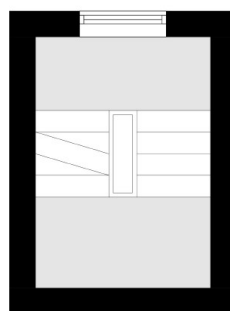
Stanton Road, London, SW20



Second Floor



Ground Floor



First Floor

Total area (approx.): 88.4 sq. m (951.4 sq. ft)