



Victory Road, SW19

£1,000,000

Undeniably one of the finest examples and one of the largest, extended houses on the road, of its kind. There are three double bedrooms, two bathrooms and a west facing garden.

Victory Road is in the sought after Battles' area within Wimbledon. Near the northern line, superb schools, a selection of shops, bars, restaurants, a cinema and a theatre, the area is vibrant and very popular.

Features

- Near 1250 Square Feet
- Three Double Bedrooms
- Two Bathrooms
- Exceptional Luxury Finish
- West Facing Garden
- Victorian Terrace House



Victory Road, SW19

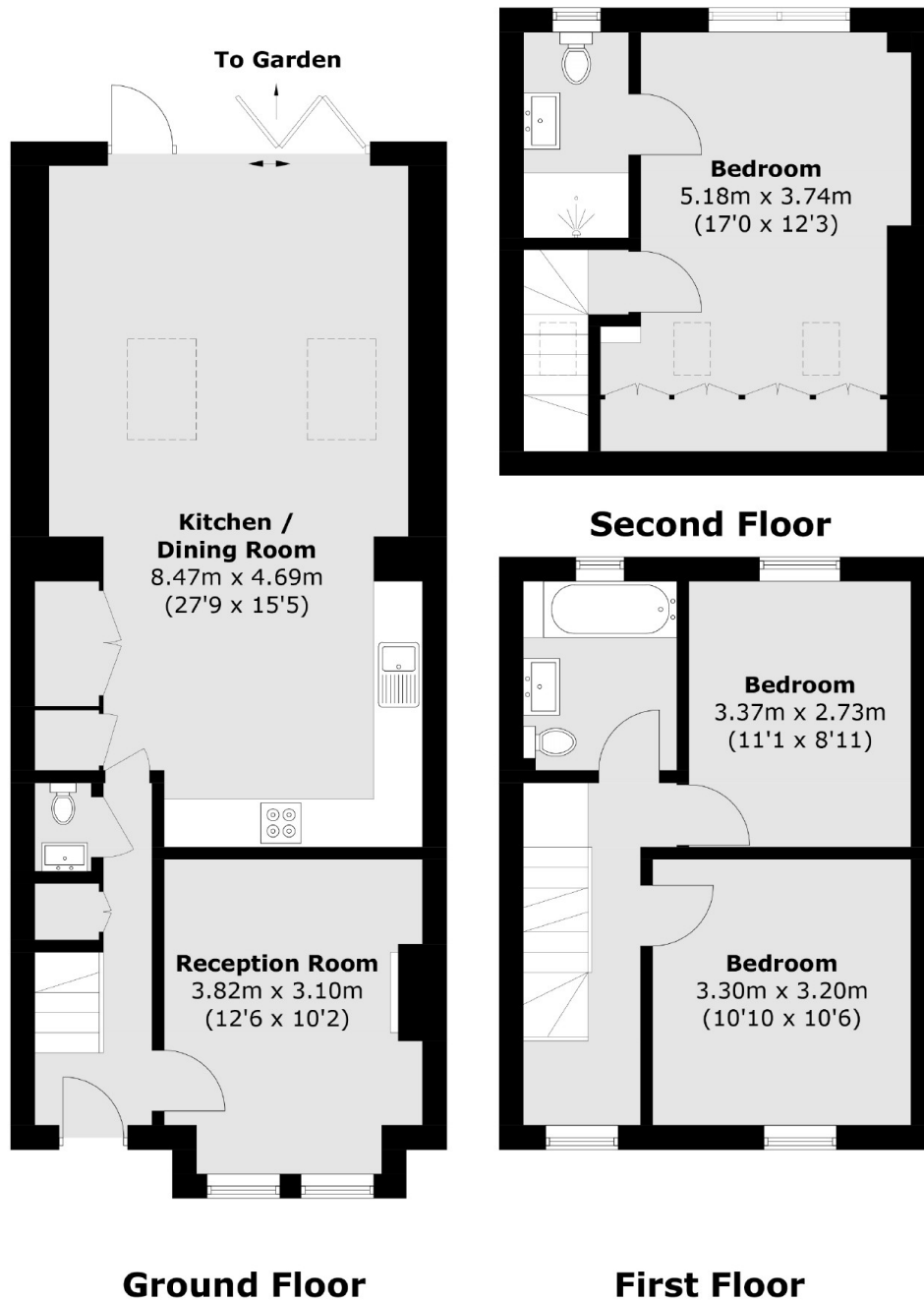
The ground floor has a front reception room complete with plantation shutters and a fireplace. There is a w/c located off the hallway, which leads to an expansive, breathtaking open kitchen/ dining room, with vaulted ceilings, four panel bifolding doors, a glass apex and large Velux windows. The vendors have extended the further than most other houses to give maximum space.

The first floor has two double bedrooms with a wonderful, fully renovated family bathroom, with the loft having been converted to offer a large double bedroom, with an ensuite shower room and eaves storage.

To the rear there is a large west facing garden, complete with rear access and a shed.



Victory Road, London, SW19



Total area (approx.): 114.7 sq. m (1,234.6 sq. ft)