



Pelham Road, SW19

£2,695 Per calendar month

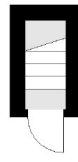
A recently refurbished three double bedroom, two bathroom split level apartment with an additional study/walk-in wardrobe on the first floor and large living room and separate modern kitchen on the top floor.

Pelham Road is well located for Wimbledon Centre with its vast array of shops, restaurants, cafés and mainline train station as well as offering easy access to South Wimbledon tube.

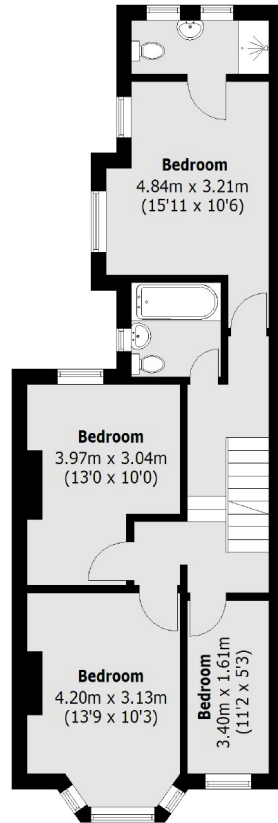
Features

- Three Double Bedrooms
- Two Bathrooms
- Split Level
- Refurbished
- Wooden Floors
- Modern Kitchen

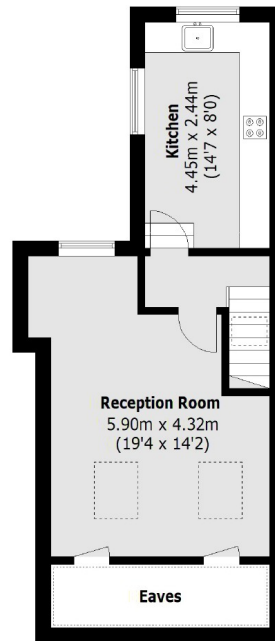
Pelham Road,
London, SW19



Ground Floor



First Floor



Second Floor

Total area (approx.): 96.7 sq. m (1,040.9 sq. ft)
(Excluding Eaves)