



## North Road, SW19

£2,250 Per calendar month

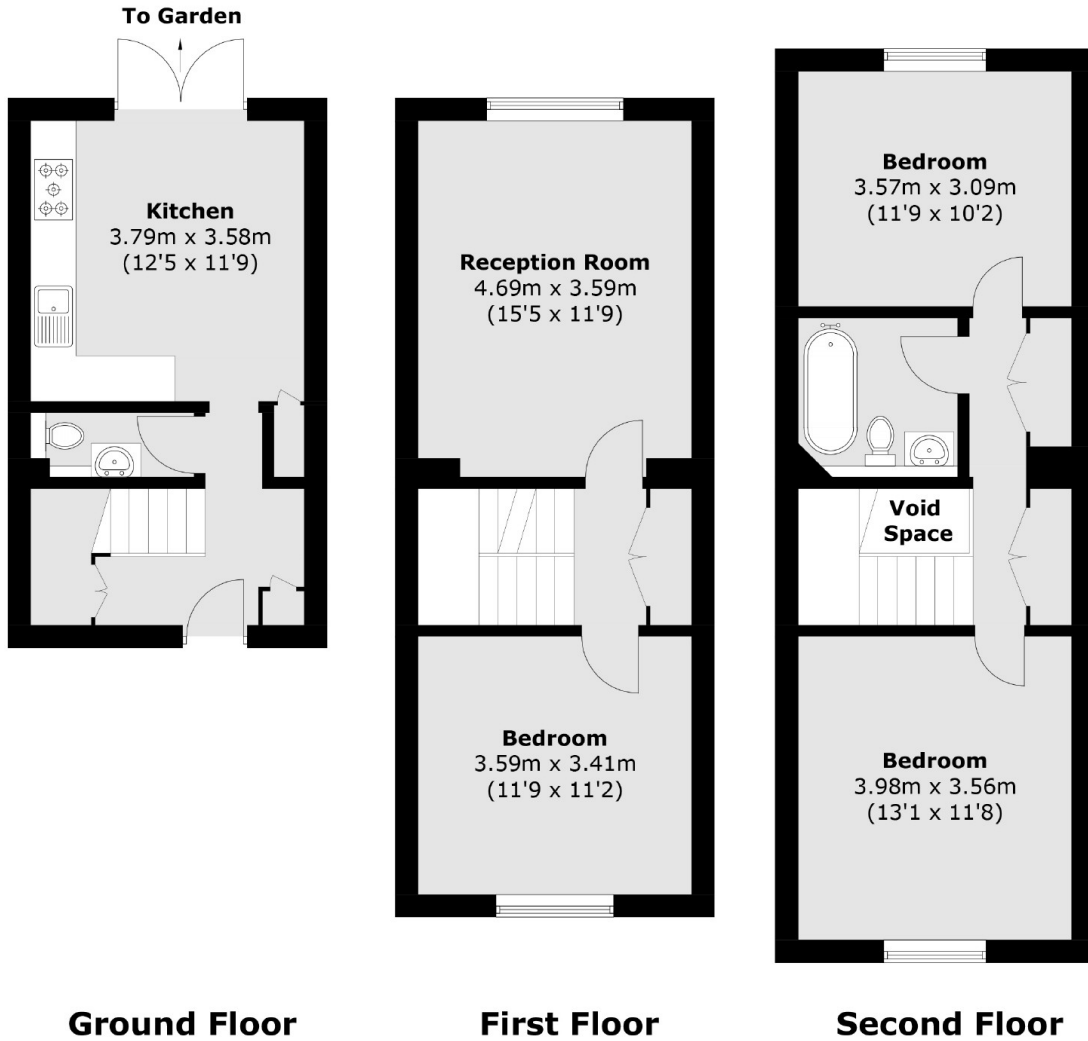
A three bedroom townhouse spread over three floors on the ground floor there is a large eat-in kitchen with doors on to the private garden with the bedrooms and living room over the first and second floor.

North Road is ideally located for Haydons Road rail station and South Wimbledon tube station whilst allowing good access to Wimbledon Mainline station, Wimbledon Village & Wimbledon Park.

### Features

- Three Double Bedrooms
- Driveway Parking
- Private Garden
- Modern Kitchen
- Lovely Bathroom
- Close to Transport

North Road,  
London, SW19



Total area (approx.): 102.2 sq. m (1,100.1 sq. ft)