



Pelham Road, SW19

£575,000

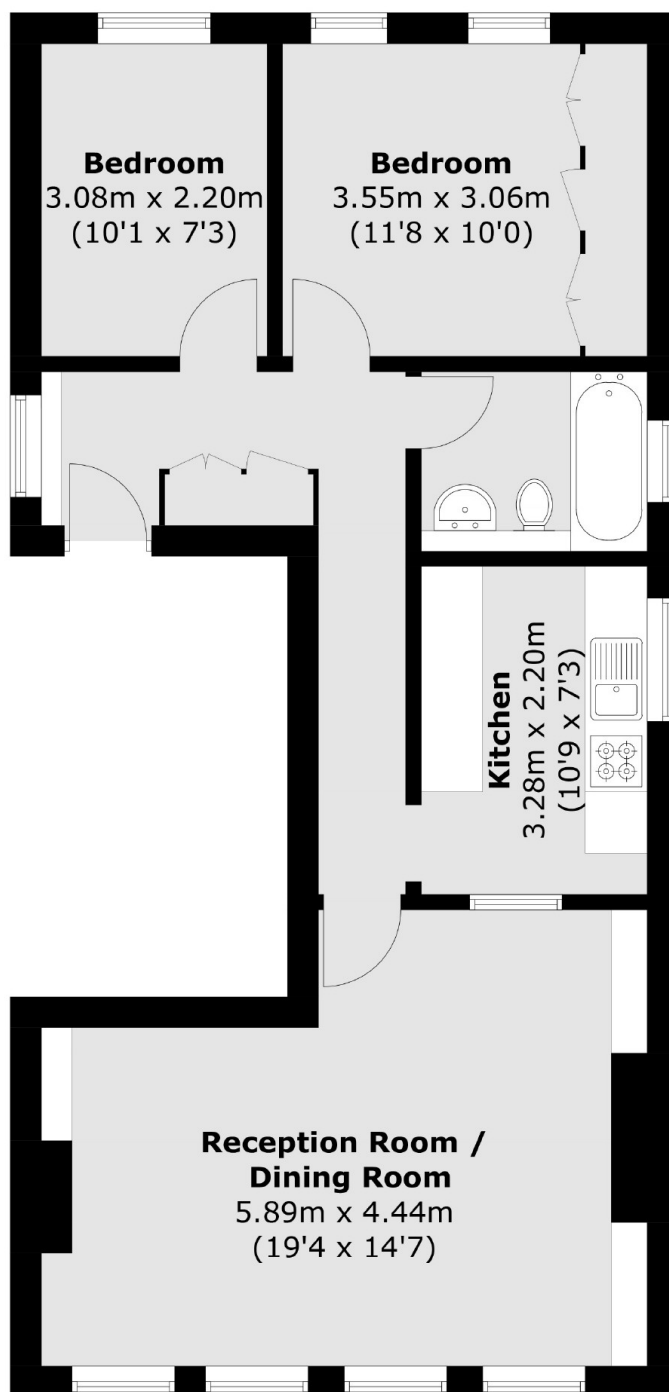
A two double bedroom, first floor Victorian conversion, with a large reception room and equidistant to both the district and northern tube line. There is a private garden to the rear, a share of freehold and is sold with no onward chain.

Located on a quiet street just off Wimbledon Broadway, close to Wimbledon tube station, shops, bars and delicious restaurants. Wimbledon Theatre is just down the road, ideal for an evening performance or matinée! Pelham Primary School is also very nearby.

Features

- Two Double Bedrooms
- Large Bright Reception Room
- No Onward Chain
- Private Rear Garden
- First Floor
- Central Wimbledon

Pelham Road, London, SW19



Total area (approx.): 63.0 sq. m (678.1 sq. ft)