



Elm Grove, SW19

£2,750 Per calendar month

A unique two bedroom townhouse to rent in Wimbledon. The property has been finished to the highest of standards, including large bedrooms with integrated storage, open plan kitchen with breakfast bar and solid dark wood flooring.

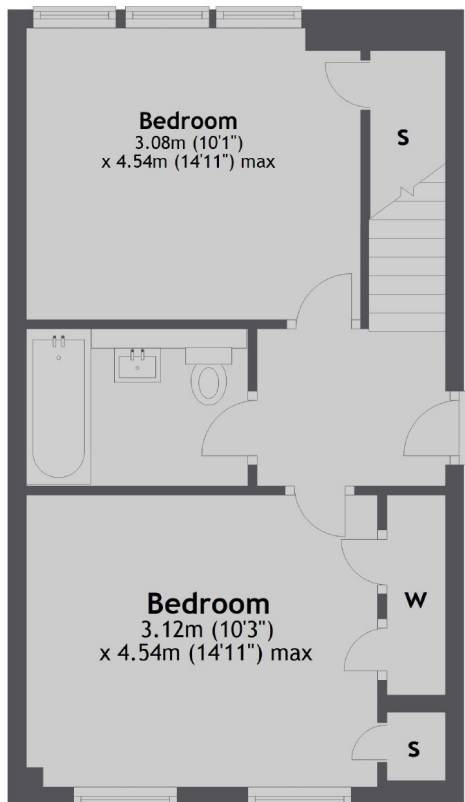
Cree Studios are located off Elm Grove. Elm Grove is cul-de-sac just over half a mile from Wimbledon Broadway and station allowing easy access to the town centre's restaurants and shops.

Features

- Two Bedrooms
- Parking
- Open Plan Kitchen
- Plenty of Storage
- Newly Refurbished
- Wimbledon Station

Elm Grove, London, SW19

Ground Floor



First Floor



Total area: approx. 74.5 sq. metres (801.8 sq. feet)