



Abingdon Close, SW19

£425,000

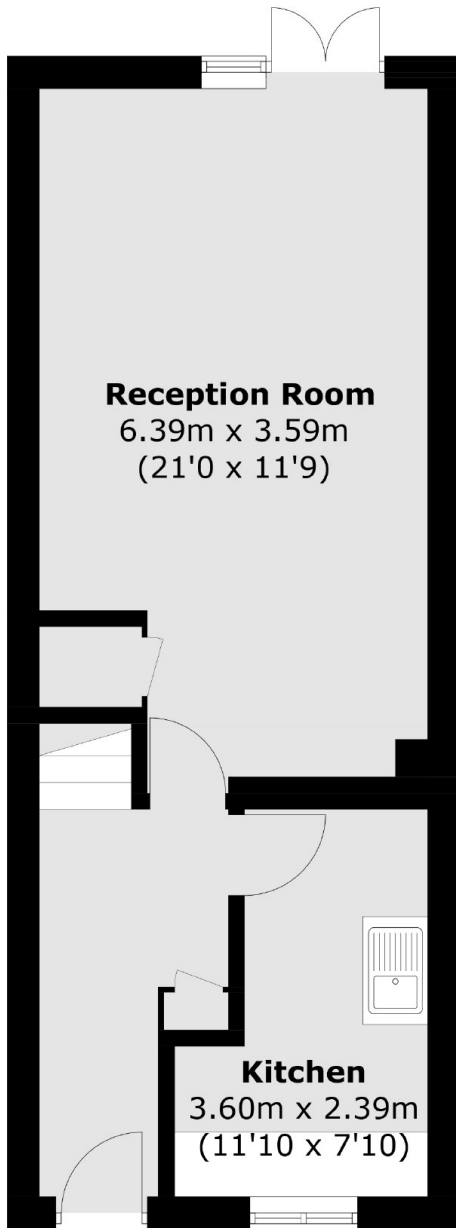
A two double bedroom, end of terrace house, with an off street parking space. The house has a private rear garden, is located in a quiet cul de sac, with large communal gardens and is sold with no onward chain.

Abingdon Close has the benefit of being well located but also a quiet area close to Colliers Wood Northern Line. The green open spaces of the Wandle Meadow Nature Park and Haydons Road Recreation Ground are also very nearby.

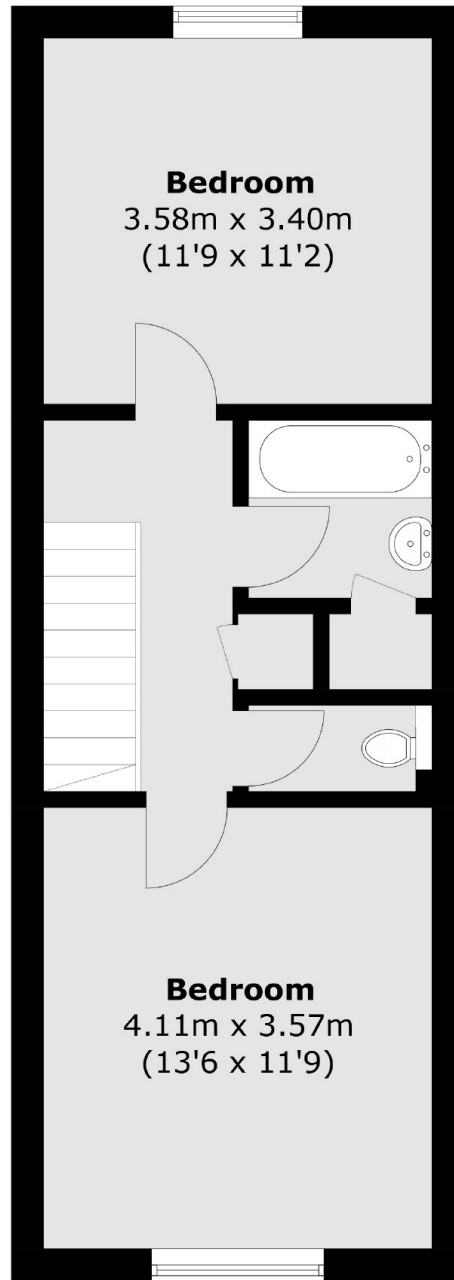
Features

- Two Double Bedrooms
- Full Renovation Required
- End Of Terrace
- No Onward Chain
- Close To Northern Line
- Freehold House

Abingdon Close, London, SW19



Ground Floor



First Floor

Total area (approx.): 77.9 sq. m (838.5 sq. ft)