



## Palmerston Road, SW19

£435,000

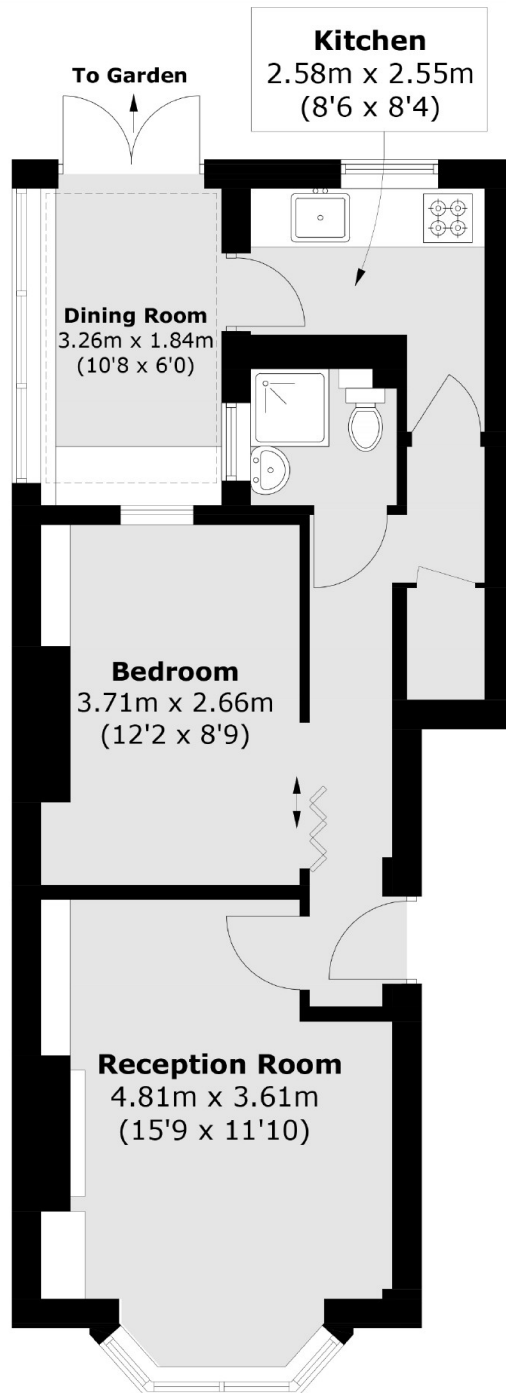
A one double bedroom ground floor Victorian conversion apartment, presented in superb condition. Further benefits include a fully integrated modern kitchen, refurbished bathroom and provides excellent space for living and working from home. There is a private landscaped garden and a freehold share.

Located on a quiet street just off The Broadway, moments from the District Line, overground station, tram link and bus routes. Shops, bars and delicious restaurants are all on your doorstep.

### Features

- Landscaped Private Garden
- Share of Freehold
- Victorian Conversion
- Quiet Central Street
- Bay Fronted Reception Room
- Conservatory

Palmerston Road,  
London, SW19



Total area (approx.): 47.7 sq. m (513.4 sq. ft)