



Newton Road, SW19

£575,000

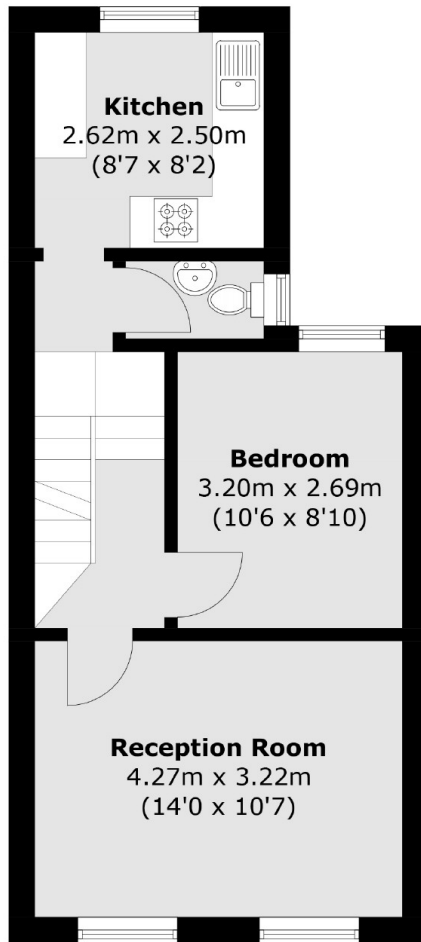
A centrally located two double bedroom, split level maisonette covering the first and second floor. The apartment has an abundance of space, is presented in good condition throughout and is offered with a long lease of 169 years.

Newton Road is next to both Dundonald Primary School and Dundonald Park. Wimbledon Town Centre is just moments away with the district line tube, overground and an excellent choice of restaurants, bars and boutique shops.

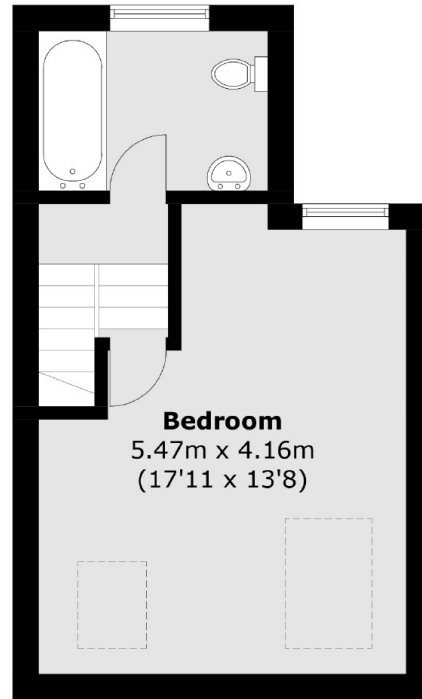
Features

- Two Double Bedrooms
- Split Level Maisonette
- Good Condition
- Central Wimbledon Location
- Incredible Schools Nearby
- No Forward Chain

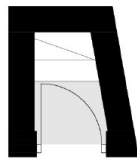
Newton Road, London, SW19



First Floor



Second Floor



Ground Floor

Total area (approx.): 66.6 sq. m (716.9 sq. ft)