



Newton Road, SW19

£600,000

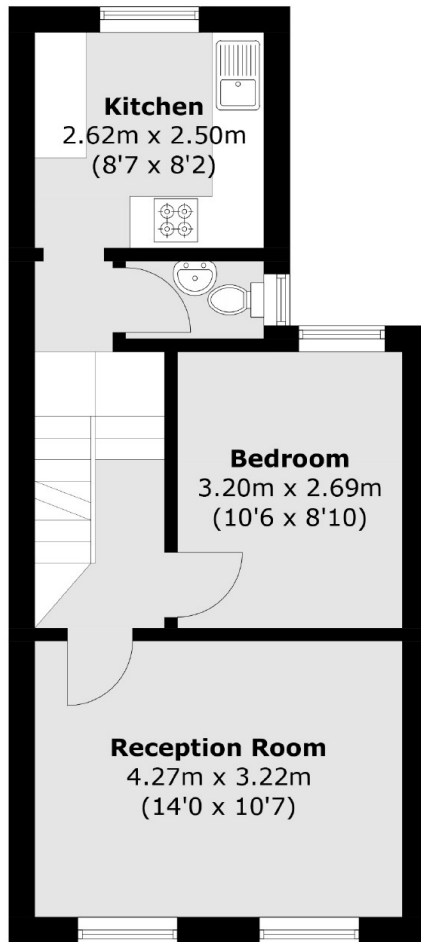
An centrally located two double bedroom, split level maisonette covering the first and second floor. The apartment has an abundance of space, is presented in good condition throughout and is offered to the market with no onward chain.

Newton Road is next to both Dundonald Primary School and Dundonald Park. Wimbledon Town Centre is just moments away with the district line tube, overground and an excellent choice of restaurants, bars and boutique shops.

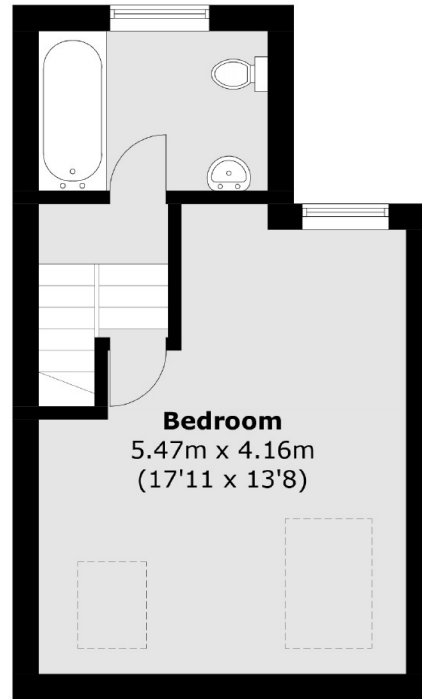
Features

- Two Double Bedrooms
- Split Level Maisonette
- Good Condition
- Central Wimbledon Location
- Incredible Schools Nearby
- No Forward Chain

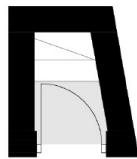
Newton Road, London, SW19



First Floor



Second Floor



Ground Floor

Total area (approx.): 66.6 sq. m (716.9 sq. ft)