

Merton High Street, SW19

£337,500

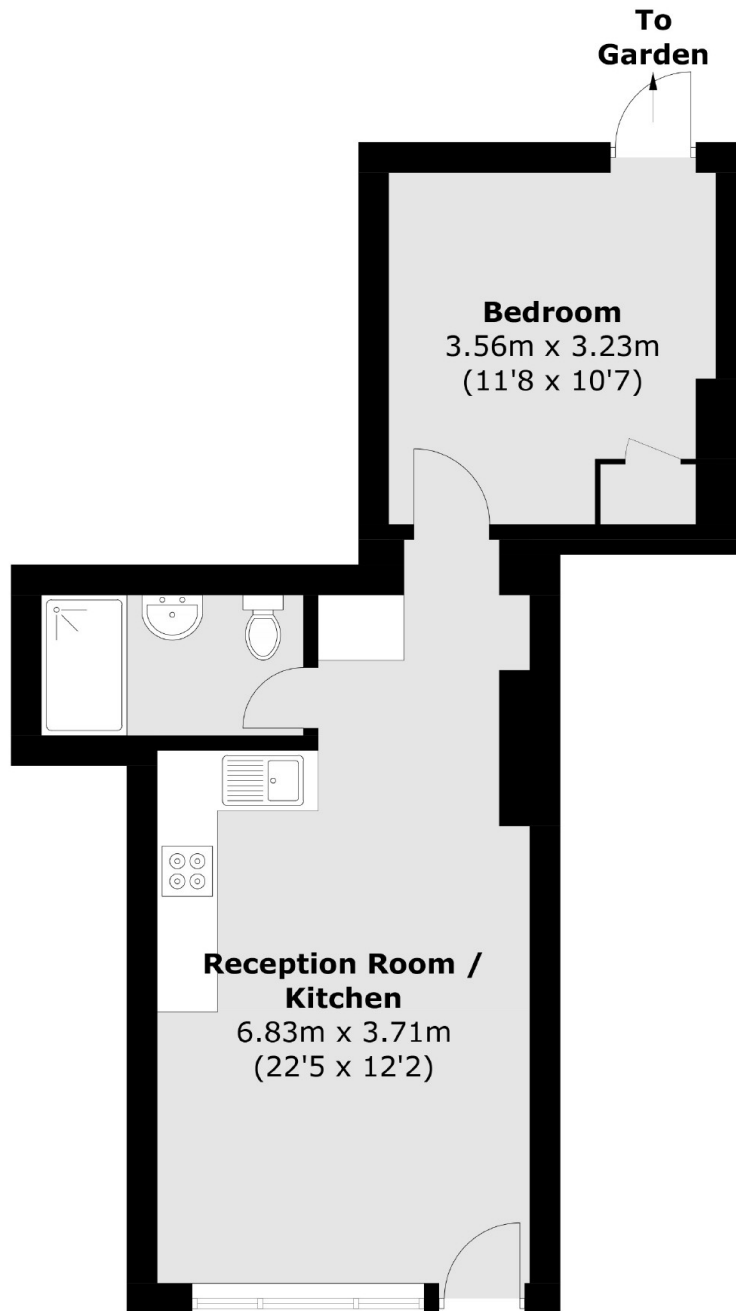
A new build, one double bedroom apartment, located on the ground floor and within very close proximity to the northern line. The apartment has high ceilings and a courtyard garden, ideal for a morning coffee or a barbeque.

Located in a superb position between Wimbledon and Colliers Wood. Both Wandle Park and Haydons Recreation Grounds are nearby and the local area has a good selection of shops and restaurants to enjoy.

Features

- New Build Apartment
- Courtyard Garden
- No Onward Chain
- High Ceilings Throughout
- Near The Northern Line
- High Spec Finish Throughout

Merton High Street, London, SW19



Total area (approx.): 39.6 sq. m (426.2 sq. ft)