



Wimbledon Hill Road, SW19

£550,000

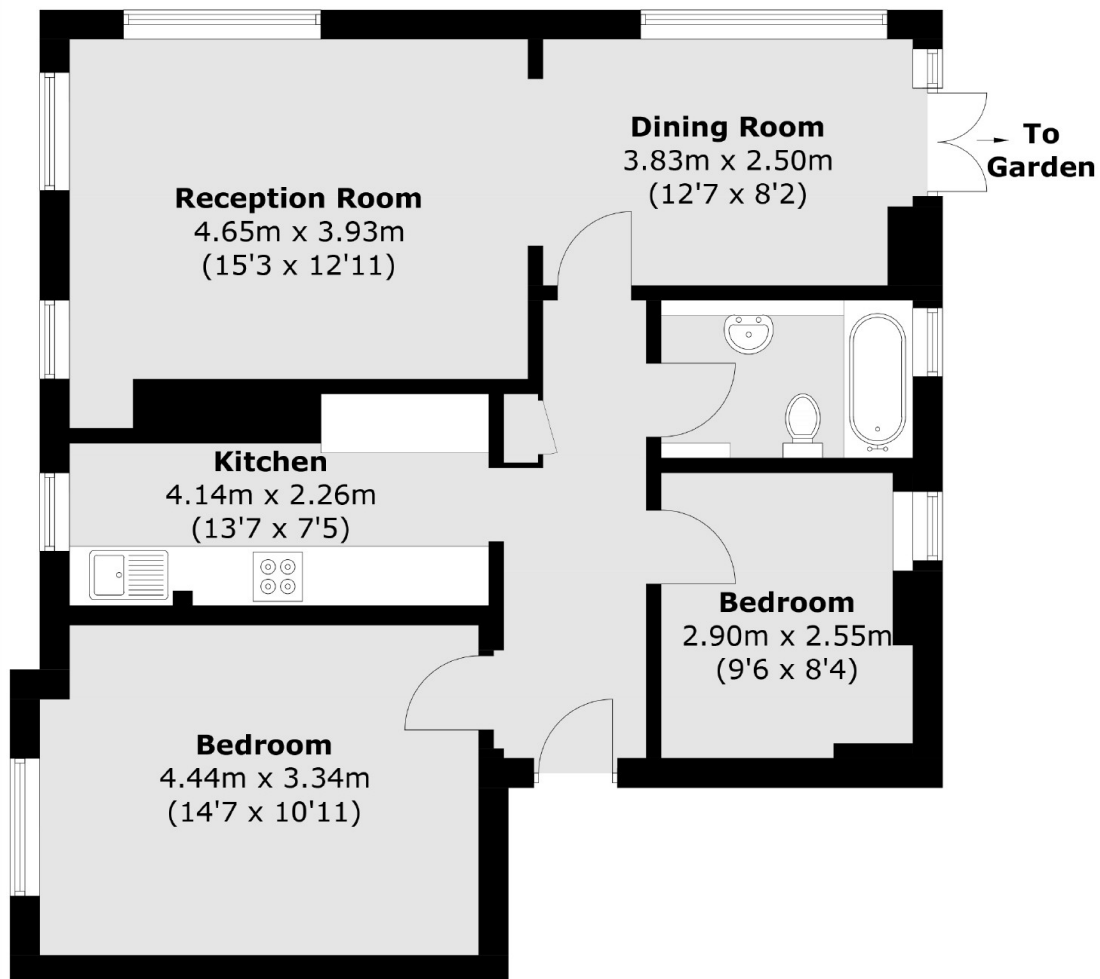
A large ground floor, two bedroom apartment, located on the edge of Wimbledon Village and complete with direct access to the communal gardens. The flat is sold with no onward chain.

Hill Court is located on the slopes of Wimbledon, a few hundred metres away you'll find Wimbledon tube and overground station with its fast link trains, in the other direction you'll discover Wimbledon Village and the common.

Features

- Two Bedrooms
- Large Reception/ Dining Room
- Direct Garden Access
- Near 72 Square Metres
- Share Of Freehold
- No Onward Chain

Wimbledon Hill Road, London, SW19



Total area (approx.): 71.8 sq. m (772.8 sq. ft)