



Kingston Road, SW20

£349,950

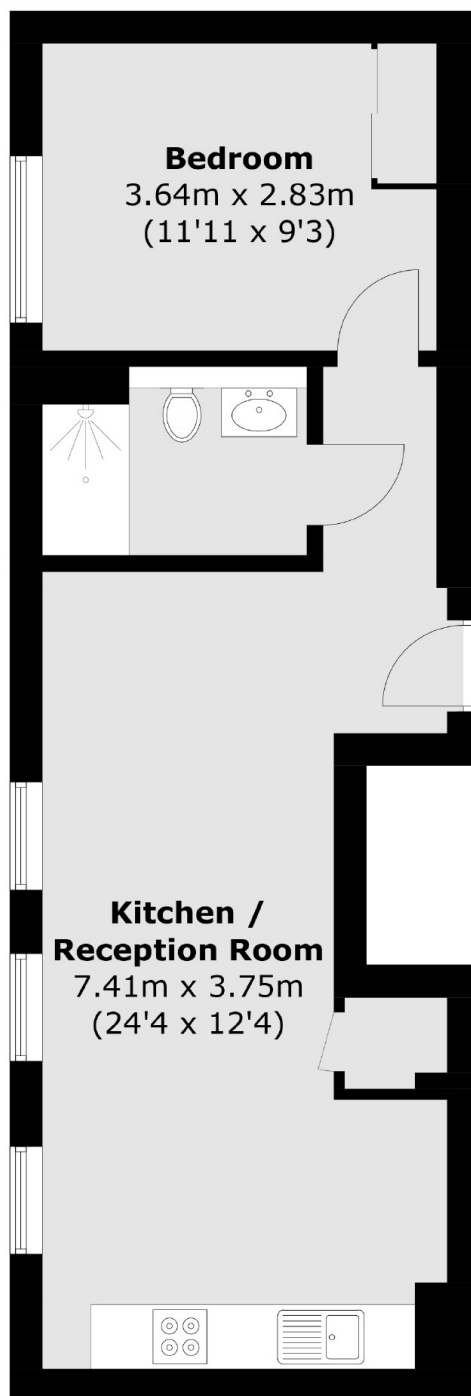
A modern one double bedroom, first floor apartment ideally located for access to Wimbledon Chase, Wimbledon Broadway and Raynes Park. The property has been finished to a high specification and further benefits from a long lease.

Kingston Road is in a popular location conveniently located for Wimbledon Town Centre. It is close to the very popular Wimbledon Chase Primary School as well as the green open space of Dundonald Park.

Features

- One Double Bedroom
- First Floor Apartment
- High Specification Finish
- Modern Development
- Over 500 SQFT
- Long Lease

Kingston Road, London, SW20



Total area (approx.): 43.2 sq. m (465.0 sq. ft)