



Shelley Way, SW19

£350,000

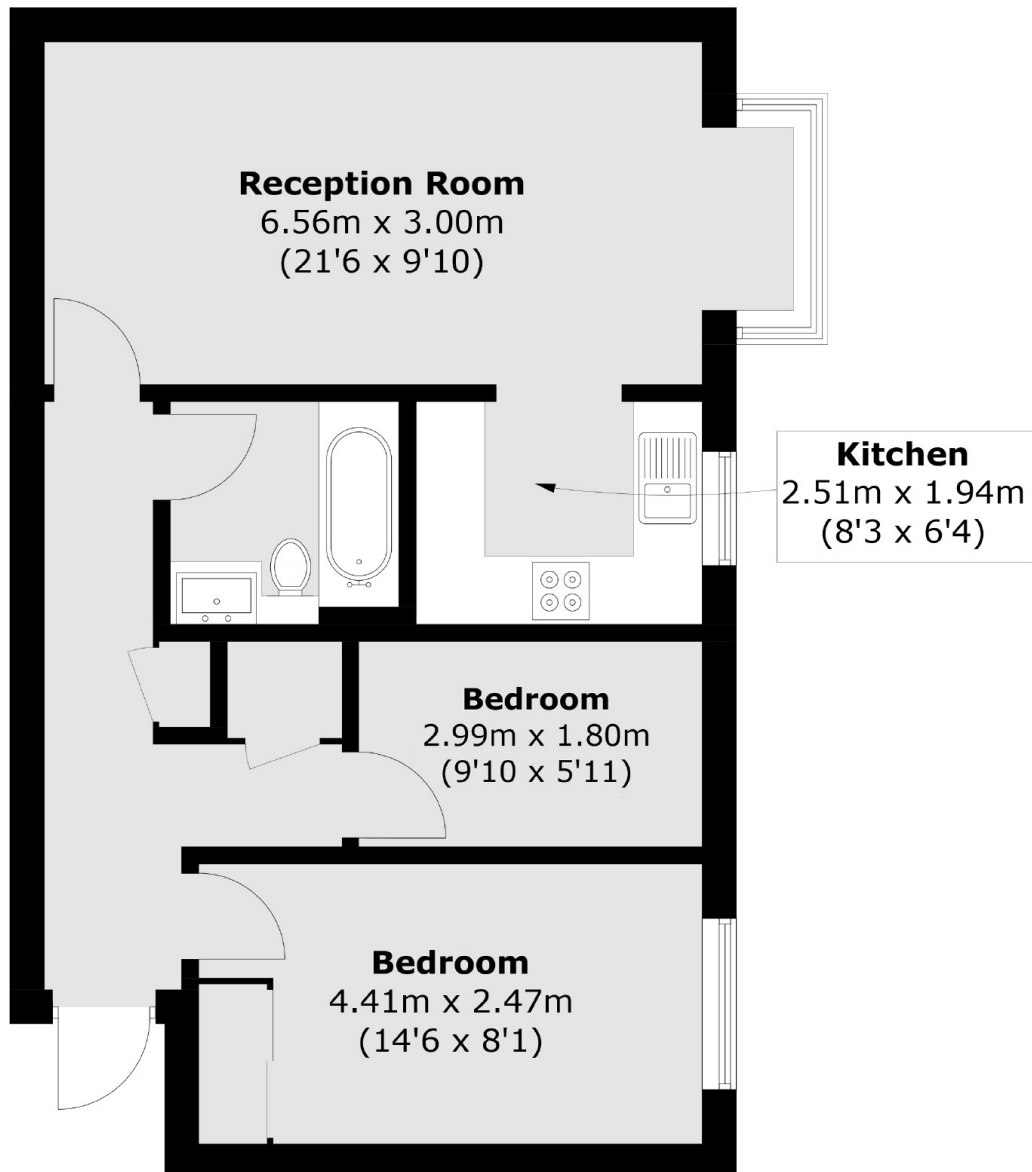
A first floor, two double bedroom, fully renovated apartment, complete with an allocated parking space. The apartment is located in a quiet part of the development and has no onward chain.

Shelley Way is a quiet development located close to Haydons Road tram link and the northern line. Wimbledon Broadway is also close by, with a fantastic selection of High Street brand shops, popular restaurants and the district line tube.

Features

- Two Double Bedrooms
- Communal Gardens
- Allocated Parking Space
- First Floor Apartment
- Beside A Nature Reserve
- Modern Throughout

Shelley Way, London, SW19



Total area (approx.): 55.1 sq. m (593.1 sq. ft)