



## Darlaston Road, SW19

£500,000

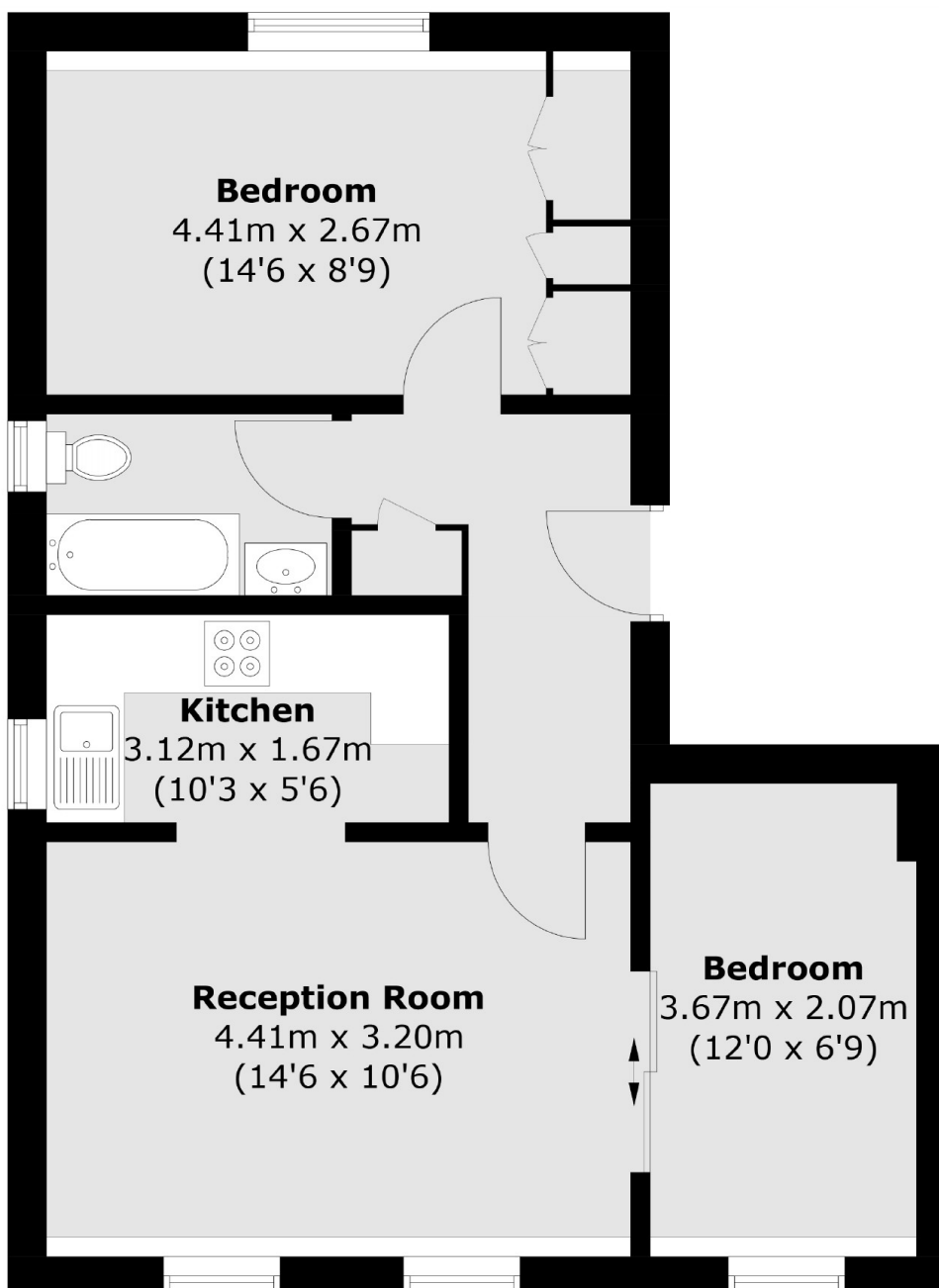
A top floor, two bedroom Victorian conversion, located on a quiet, desirable street. There are communal gardens, a garage, share of freehold and exceptional far reaching views.

Darlaston Road is certainly one of Wimbledon's most highly regarded roads with the village and the common nearby. District line, National Rail and Tramlink are within walking distance, as well as churches, library, banks, gyms, supermarkets, restaurants, bars and shops.

### Features

- Two Bedrooms
- Far Reaching Views
- Garage
- Communal Gardens
- Share Of Freehold
- Detached Victorian Building

# Darlaston Road, London, SW19



Total area (approx.): 50.0 sq. m (538.2 sq. ft)