



Kenley Road, SW19

£975,000

A four double bedroom, end of terrace house complete with off street parking. The house, approaching 2000 square feet in total, has already been extended in to the loft and to the rear, with a large studio in the garden.

The property is located near to Rutlish School and enjoys commanding views over the playing fields. Within close proximity to excellent transport links, including the Northern Line, Thameslink and the catchment area for Merton Park Primary School.

Features

- End Of Terrace
- Four Bedrooms
- Impressive Rear Garden
- Large Garden Studio
- No Onward Chain
- Off Street Parking



Kenley Road, SW19

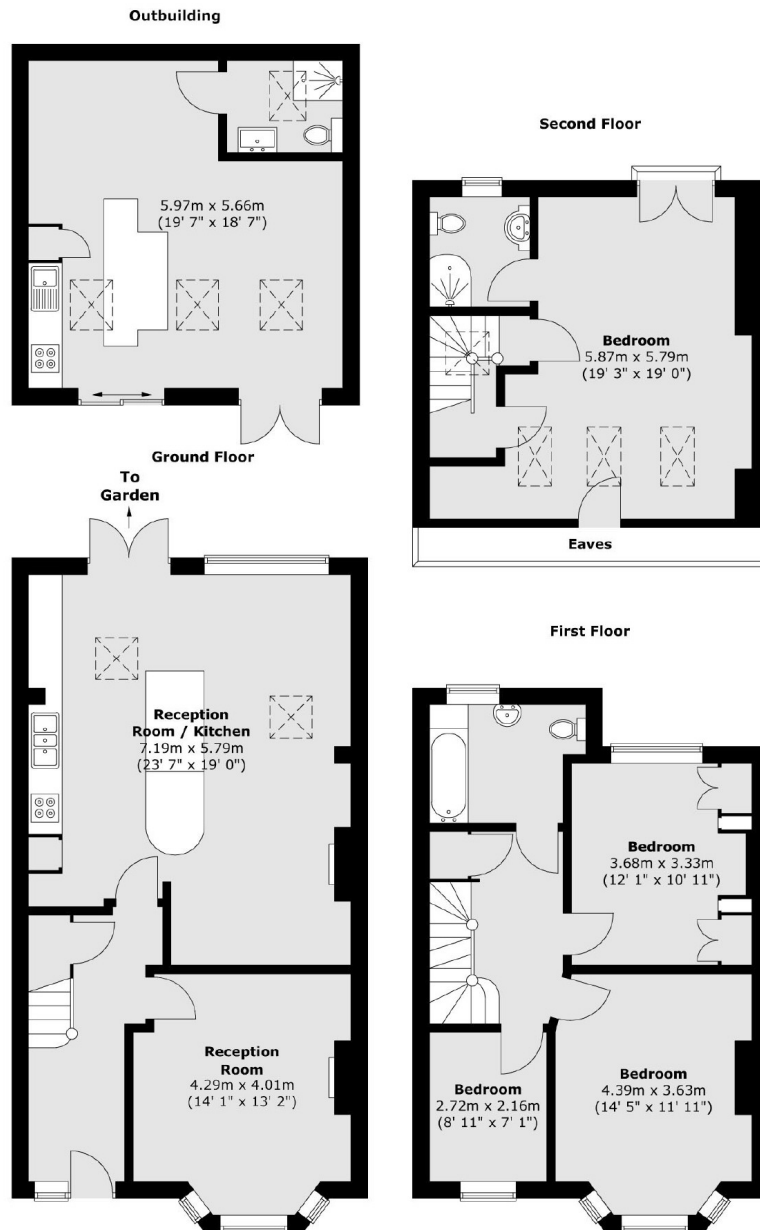
The ground floor has a large reception room to the front with a period bay window. The rear of the house has been extended and the rooms combined to be able to create a large, open kitchen/ reception room, perfect for the family to come together, or large gatherings.

The first floor of the house has three bedrooms and a family bathroom, with the loft having been converted to offer a large double bedroom with ensuite shower room.

The garden is a decent size and has been landscaped in parts, including a patio perfect for barbeques, a decked area at the back beside the studio and a lawn in the middle. A studio has been constructed measuring in excess of 370 square feet and housing a bathroom, kitchen and reception room/ bedroom. The house is sold with no onward chain.



Kenley Road, London, SW19



Total area (approx.) : 149.9 sq. m (1613 sq. ft)
Total outbuilding area (approx.) : 34.8 sq. m (374 sq. ft)
Total balcony area (approx.) : 0.2 sq. m (2 sq. ft)