



Worple Road, SW19

£485,000

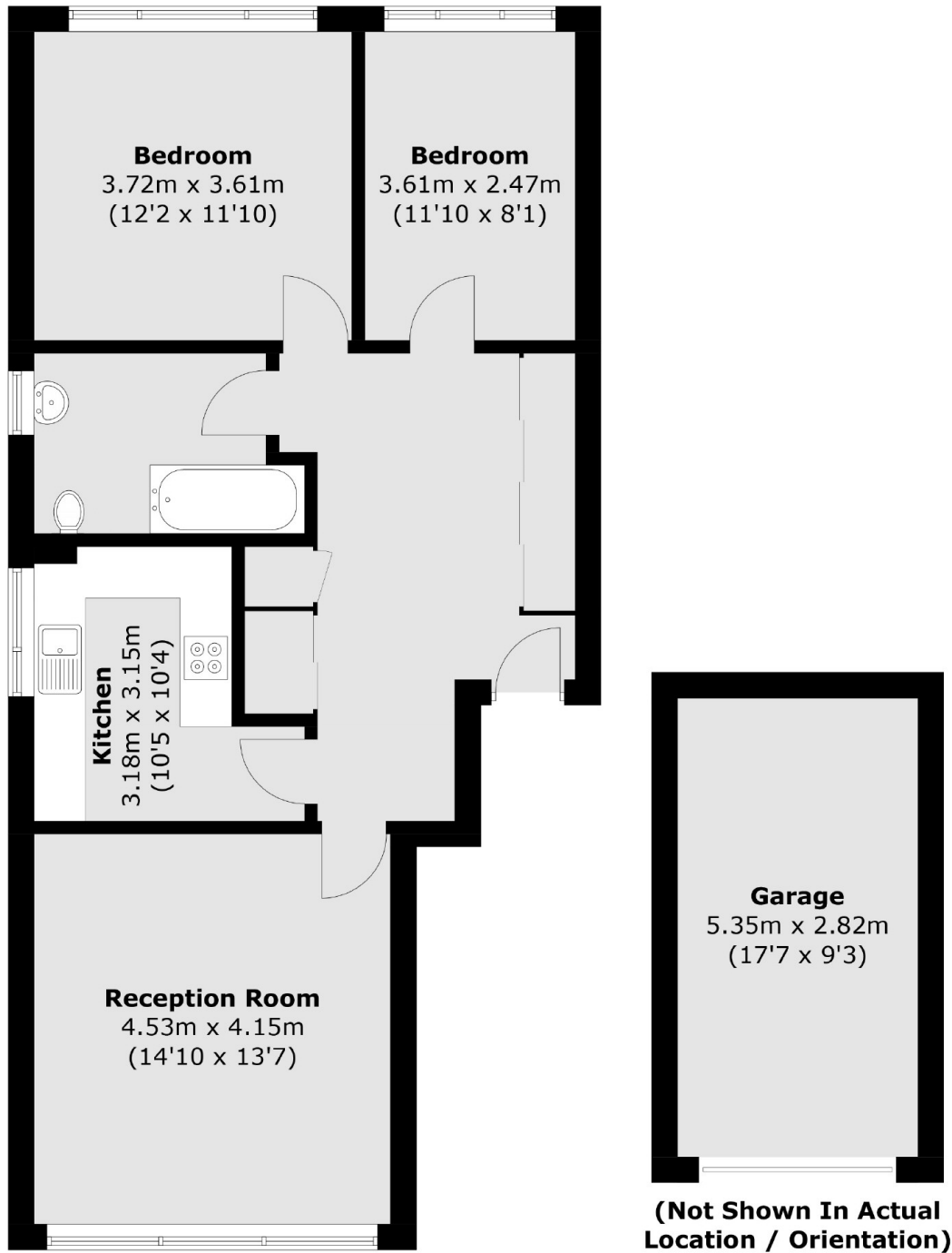
A first floor, exceptionally large, two double bedroom apartment presented in good condition throughout. It is offered to the market with no onward chain and has a garage.

Worple Road is located near the centre of Wimbledon at the foot of the hill to Wimbledon Village. The District line is moments away, alongside a range of superb shops, bars and restaurants.

Features

- Two Double Bedrooms
- Over 800 Square Feet
- Ample Storage Throughout
- Long Lease
- Garage
- No Onward Chain

Worple Road, London, SW19



Total area (approx.): 75.3 sq. m (810.5 sq. ft)
Garage: 15.0 sq. m (161.4 sq. ft)