



South Park Road, SW19 £539,999

A two double bedroom, two bathroom, split level property, located in the centre of Wimbledon. The property has been recently refurbished to a superb standard, has a long lease and is sold with no onward chain.

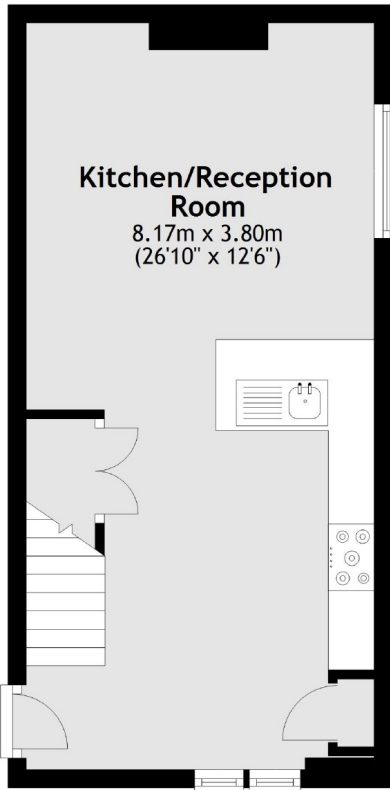
South Park Road is a popular tree lined road next to South Park Gardens. This area has a fantastic selection of High Street brand shops, popular restaurants and excellent transport links just a short walk away.

Features

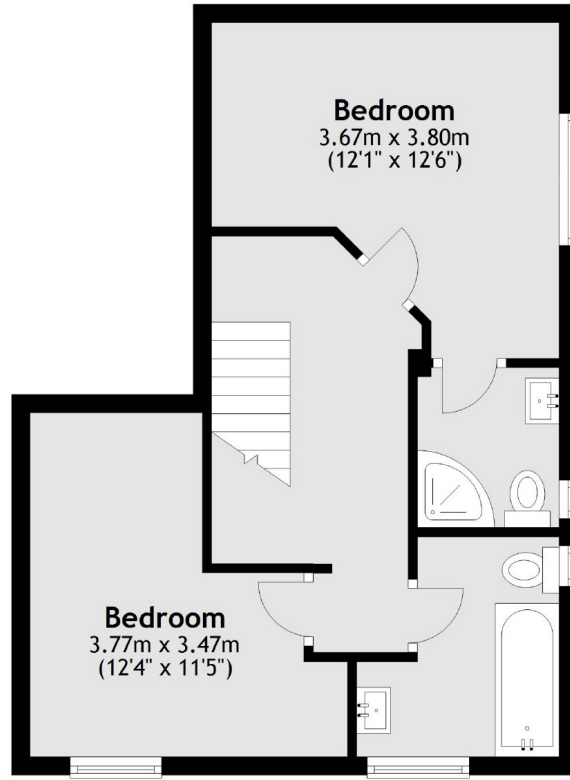
- Two Bedrooms
- Two Bathrooms
- Split Level Property
- Central Wimbledon
- Recently Refurbished
- No Onward Chain

South Park Road,
London, SW19

Ground Floor



First Floor



Total area: approx. 69.0 sq. metres (742.8 sq. feet)