



Somerset Road, SW19  
£875,000

**Dexters**



## Somerset Road, SW19

A rare example of a fully renovated apartment, with breathtaking views towards London, capturing a multitude of iconic sites. There are two bedrooms, two bathrooms a garage and no onward chain.

Perfectly modelled on a five star luxury hotel suite/ apartment, the property has been completely taken back to brick and renovated to the highest standard. The owner has gone paid special attention to refit every aspect with excellent style and taste.

The reception/ dining room is fully open plan with a bespoke high spec kitchen incorporated. The windows wrap around, with beautiful views stretching over trees and towns in multiple directions, including towards Central London and The Surrey Hills.

There are two very generous sized double bedrooms, the master complete with an en-suite bathroom. In addition there is a wonderful family bathroom, a garage in block, a concierge service and beautifully manicured gardens.

Located close to Wimbledon Village, between the wilds of Wimbledon Common and the famous Wimbledon Tennis Grounds. The development is leafy and peaceful with amenities just a short walk away.

### Features

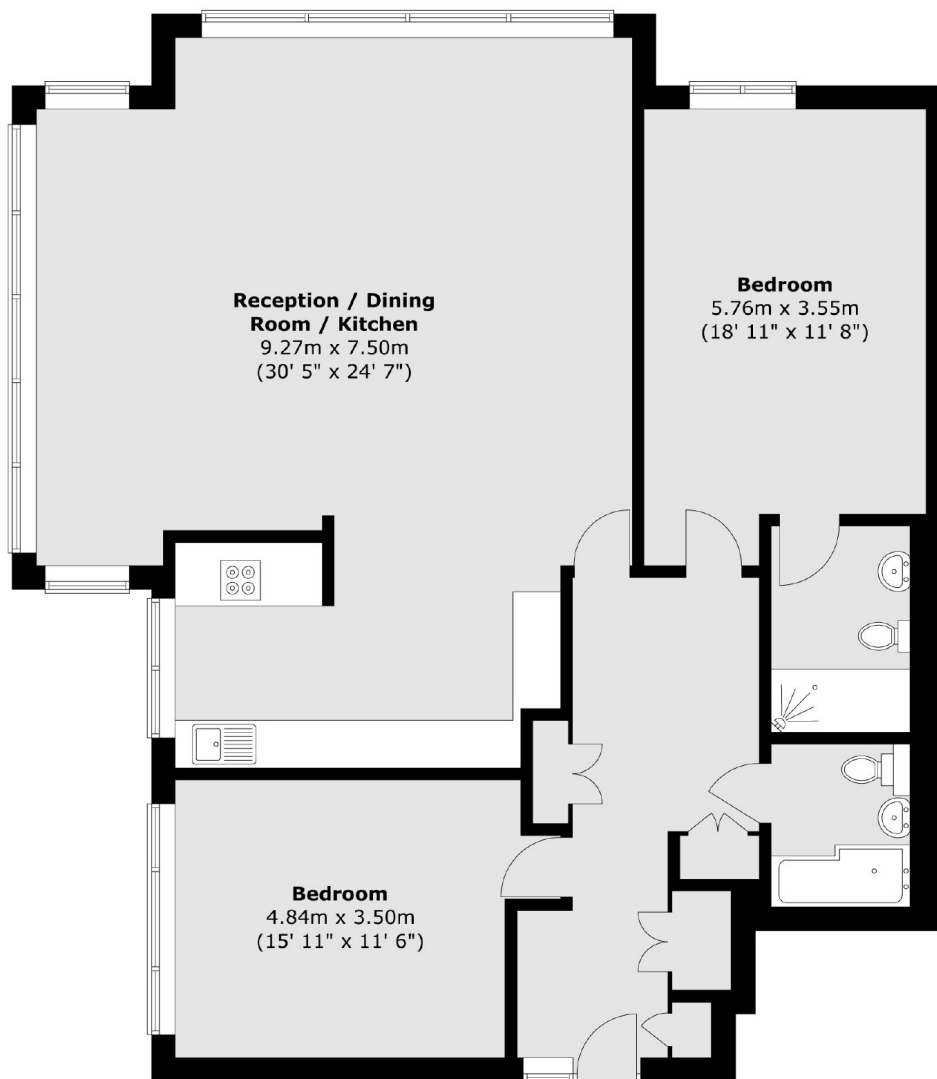
- 1318 Square Feet
- Communal Gardens
- Garage In Block
- Concierge Service
- Stunning London Views
- No Onward Chain







Somerset Road,  
London, SW19



Total area (approx.) : 122.5 sq. m (1318 sq. ft)