



Craven Gardens, SW19

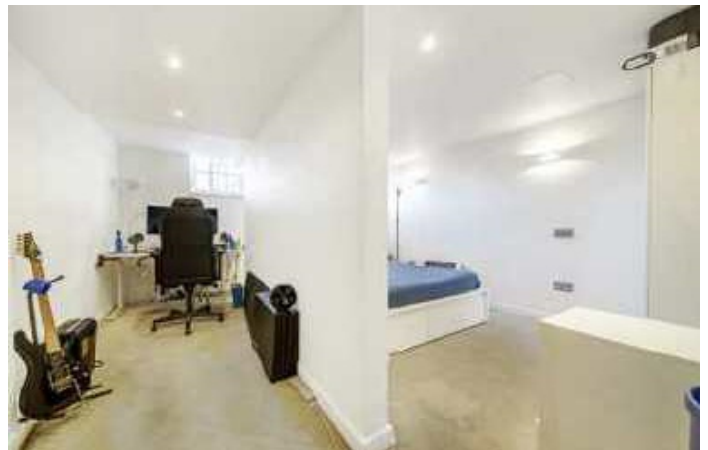
£799,950

A three double bedroom, three bathroom, organised over the ground and first floor. There is a secure communal entrance, with wonderful vaulted ceilings, large windows and no onward chain.

Located on a quiet street, this family orientated location is close to highly sought after schools, a fantastic selection of High Street brand shops, restaurants and great transport links.

Features

- Three Double Bedrooms
- Three Bathrooms
- Split Level
- Ground And First Floor
- Victorian School Conversion
- No Onward Chain



Craven Gardens, SW19

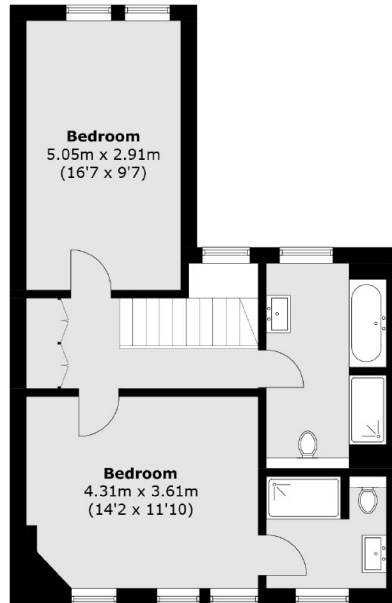
The flat is accessed via a secure communal entrance. The hallway leads to the open reception/dining room, complete with vaulted ceiling and a large window which floods the room with light. The kitchen is semi open plan to the reception room, tucked away to give convenience and separation from the main living area.

The master bedroom, with walk in wardrobe and ensuite bathroom is located on the ground floor, with the two further double bedrooms located on the first floor, with an ensuite and the other with access to the main family bathroom.

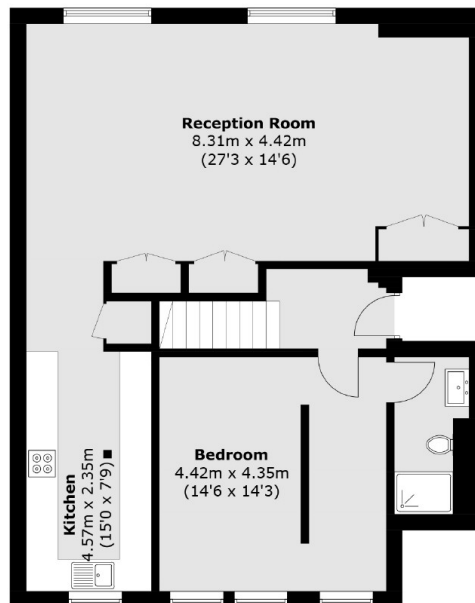
The property is measured at near 1,450 square feet, organised with a very lateral layout in mind and is sold with no onward chain.



Craven Gardens, London, SW19



First Floor



Ground Floor

Total area (approx.): 137.9 sq. m (1,484.3 sq. ft)