



Havelock Road, SW19

£800,000

Dexters



Havelock Road, SW19

A three bedroom, two bathroom mid terrace Victorian house. In good condition throughout, the house is on a quiet tree lined street and measures over 1000 square feet.

The ground floor has a large reception room to the front with working fireplace and oak flooring, leading to an open plan kitchen/dining room with Bi-Folding doors leading out to your garden.

The first floor has two generous double bedrooms, one with built in storage, and a modern family bathroom. The loft has been extended, which allows you to take full advantage of the allotment views to the rear. There is a large double bedroom and a modern shower room.

The property retains the potential to extend the ground floor, however the garden is a great size with a large hardwood decked area and steps down to a lawn and integrated shed beneath the decking.

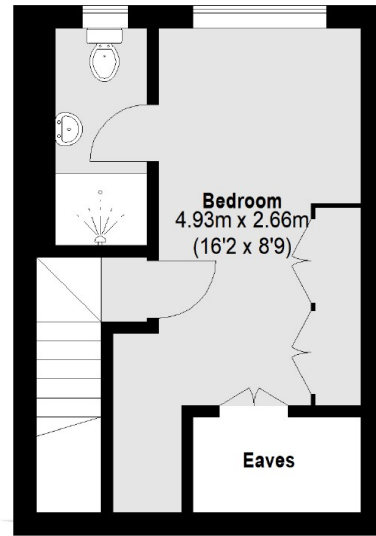
Located on a wide, quiet and tree-lined street, just a short walk from a fantastic selection of high street shops, popular restaurants and excellent transport links from Haydons Road.

Features

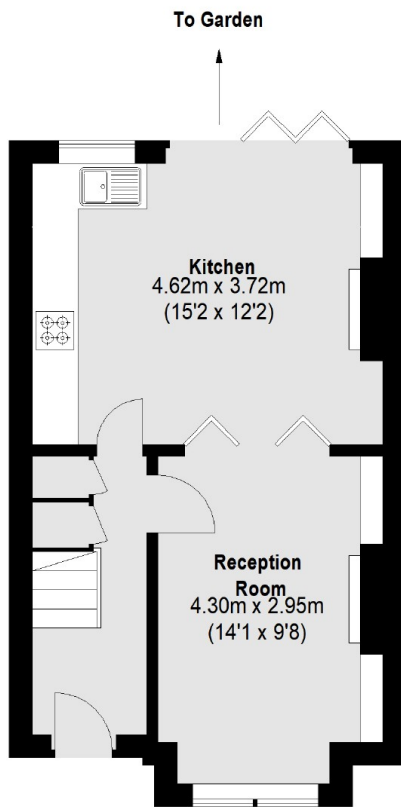
- Three Double Bedrooms
- Two Bathrooms
- Victorian
- Potential for Further Expansion
- Large Garden
- Quiet Tree Lined Road



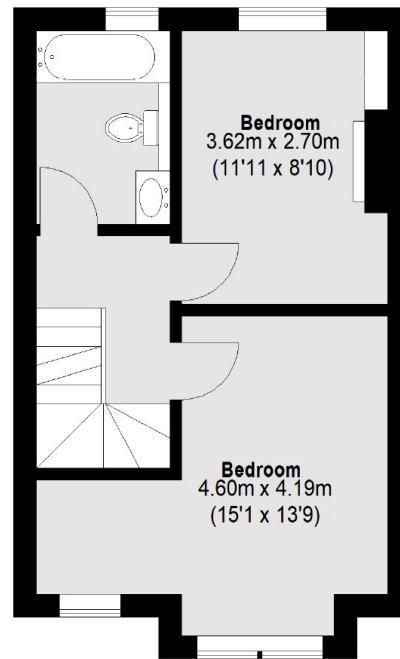
Havelock Road, London, SW19



Second Floor



Ground Floor



First Floor

Total area (approx.): 95.39 sq. m (1026 Sq. ft)
(Excluding Eaves)