



Pepys Road, SW20

£450,000

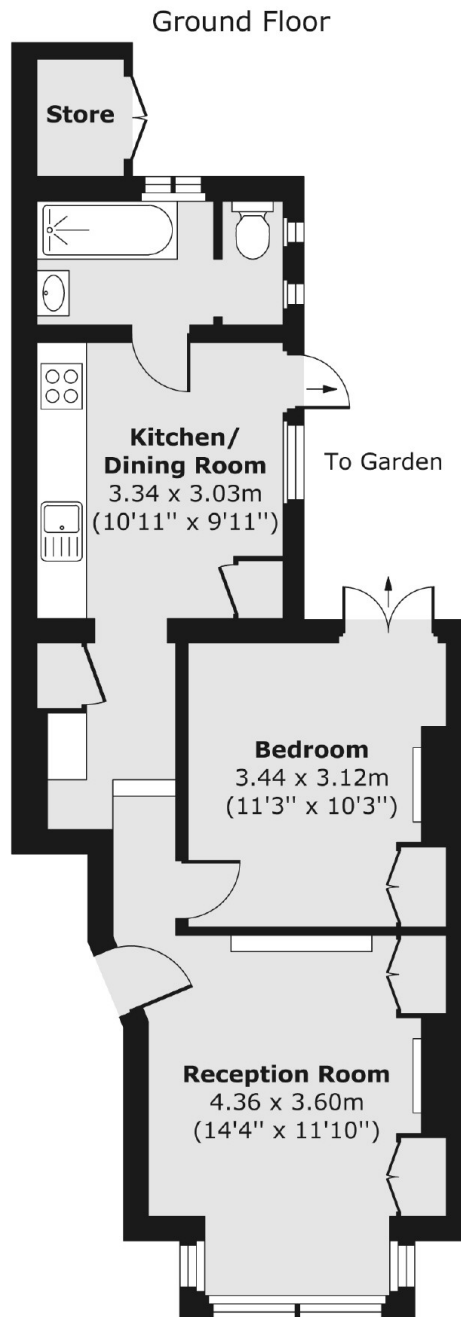
A beautifully presented, one double bedroom Victorian conversion flat, complete with a private garden, a long lease and the potential to extend and refurbish to create a two bedroom garden flat.

The property is situated in a desirable area of West Wimbledon, equidistant to both Wimbledon Village and Raynes Park. The Overground is accessible from Raynes Park alongside Waitrose and an array of restaurants and coffee shops.

Features

- Victorian Conversion
- Private Garden
- Potential To Extend
- Ground Floor
- Kitchen/ Breakfast Room
- Character Throughout

Pepys Road, London, SW20



Total area (approx.) 46.82 sq. m (504 sq. ft)
Store area (approx.) 1.51 sq. m (16 sq. ft)