



## Plough Lane, SW17

£595,000

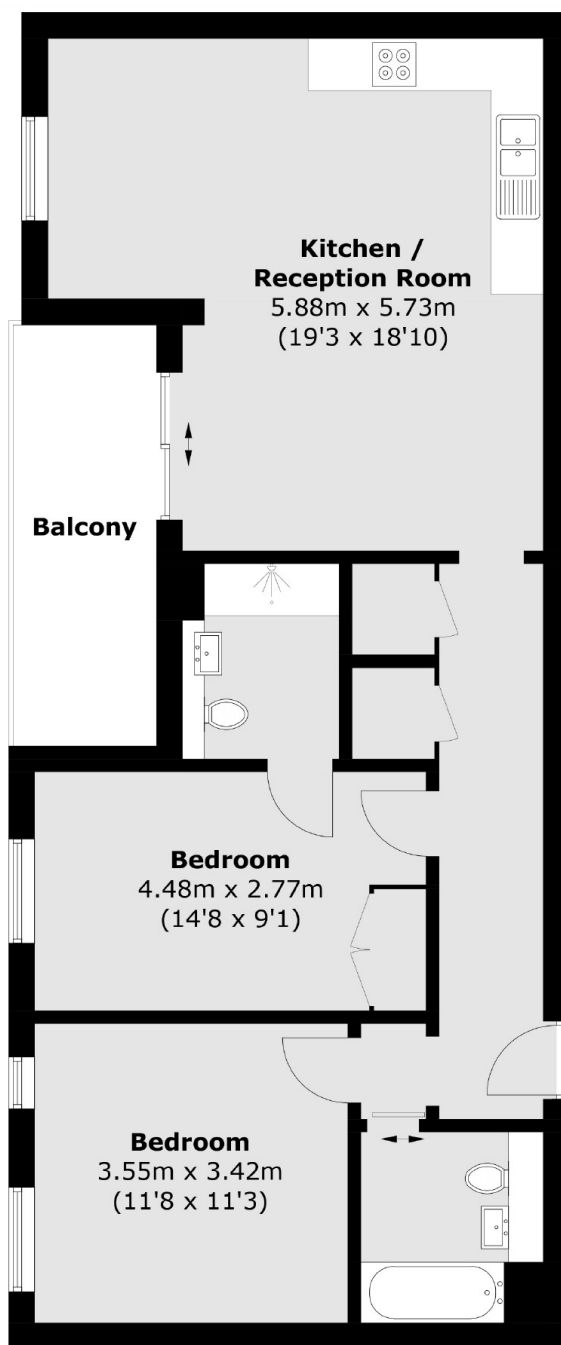
A second floor, new build, two double bedroom, two bathroom apartment, with an exceptional private balcony and far reaching views. There are well manicured communal gardens and no onward chain

Ideally located within close proximity of Wimbledon Park and an outstanding primary school. There's easy access to both Earlsfield and Southfields where there are excellent transport links and a huge variety of shops, bars and restaurants.

### Features

- Pets Accepted (STT)
- Two Double Bedrooms
- Two Bathrooms
- New Build Guarantee
- Potential For Parking
- Large Private balcony

# Plough Lane, London, SW17



## Raised Ground Floor

Total area (approx.): 77.2 sq. m (831.0 sq. ft)  
Balcony: 8.0 sq. m (86.1 sq. ft)