



Dorset Road, SW19

£995,000

A three bedroom family home in Merton Park in need of modernisation. The property has off street parking and depending on planning could be extended both to the rear and loft.

Located on one of the best roads in Merton Park. Dorset Road enjoys excellent transport links nearby. The house is close to Rutlish Secondary School and in the catchment for Merton Park Primary School, rated outstanding.

Features

- Semi-Detached
- Three Bedrooms
- Off Street Parking
- Large Garden
- Huge Potential To Extend
- Prime Location



Dorset Road, London, SW19

As you enter on the ground floor there is a large double reception room and separate eat in kitchen which leads to a conservatory and then onto the garden. Upstairs you have three good sized bedrooms and a large bathroom.

The unconverted loft offers fantastic potential to extend into giving perhaps a further two bedrooms or one large master bedroom suite with an en-suite bathroom.

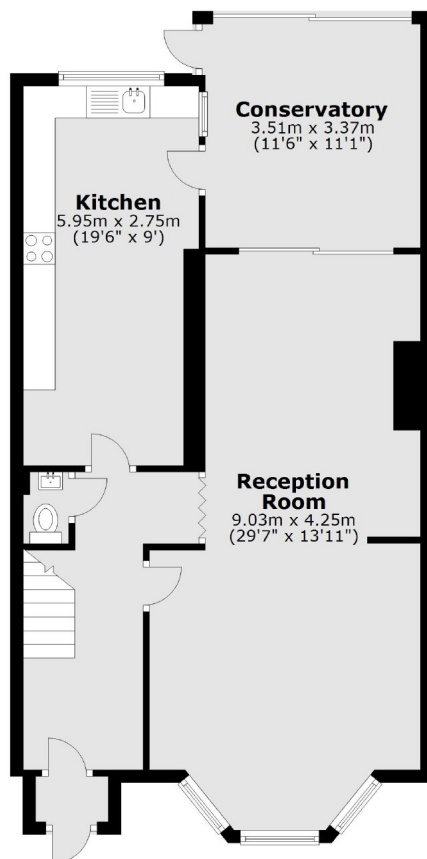
The size of the garden offers fantastic potential to extend without losing the appeal of a having a large garden, even leaving space for a work from home space/studio or gym. The property benefits from off street parking to the front for two cars and side access to the garden.



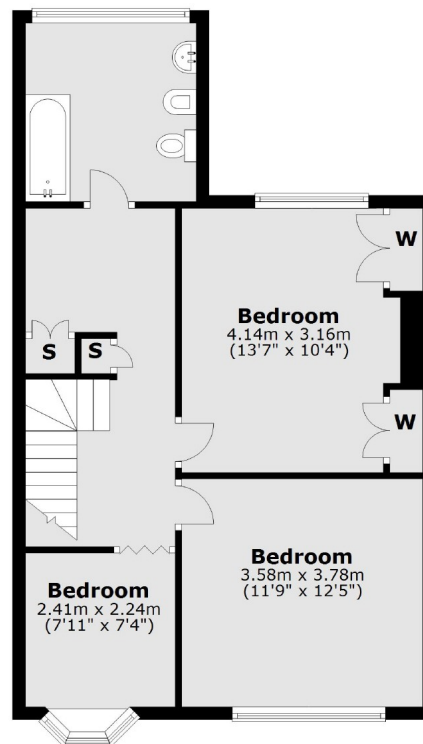


Dorset Road,
London, SW19

Ground Floor



First Floor



Total area: approx. 129.9 sq. metres (1398.1 sq. feet)

Contact

To arrange a viewing call our office on the number below or visit our website.



Energy Rating: D. We aim to make our particulars both accurate and reliable. However they are not guaranteed; nor do they form part of an offer or contract. If you require clarification on any points then please contact us, especially if you're traveling some distance to view. Please note that appliances and heating systems have not been tested and therefore no warranties can be given as to their good working order.