



## St. Luke's Avenue, SW4

£2,150 Per calendar month

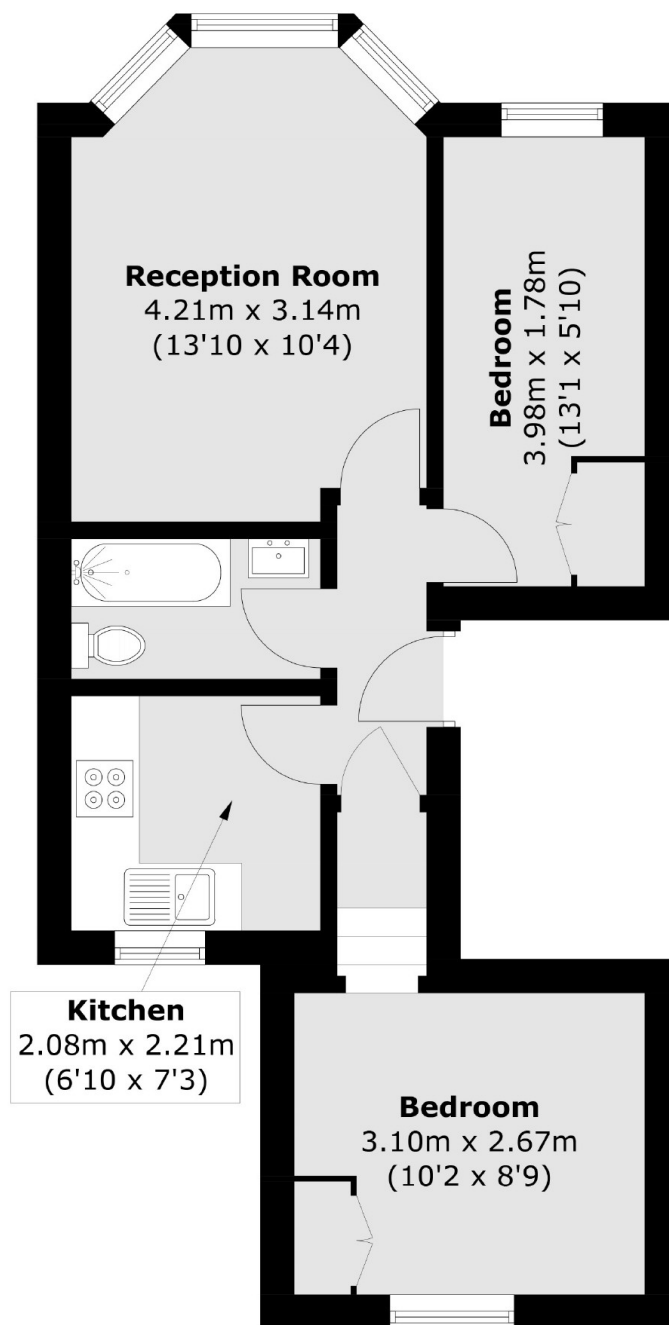
Set on the first floor, this property offers two double bedrooms, a large reception room with dining space and a modern separate kitchen. Ideal for a professional couple or sharers looking to be in the heart of Clapham.

St. Luke's Avenue provides enviable access to the amenities of the Clapham High Street, along with local transport links and the wide open spaces of Clapham Common.

### Features

- Two Double Bedrooms
- Large Reception Room
- First Floor Flat
- Modern Kitchen
- Neutral Interior
- Prime Location

# St. Luke's Avenue, London, SW4



Total area (approx.): 40.4 sq. m (434.9 sq. ft)