



## Ostade Road, SW2

£2,500 Per calendar month

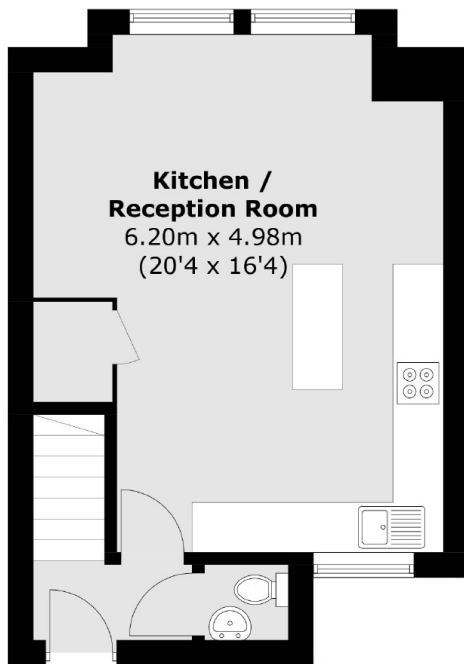
Arranged over two floors, this two bedroom property offers an attractive open plan reception room with large floor to ceiling windows, wooden flooring and a modern kitchen with a breakfast bar.

A residential street located between Brixton Hill and Streatham Hill. With access to amenities, including the green open spaces of Brockwell Park and Brixton station.

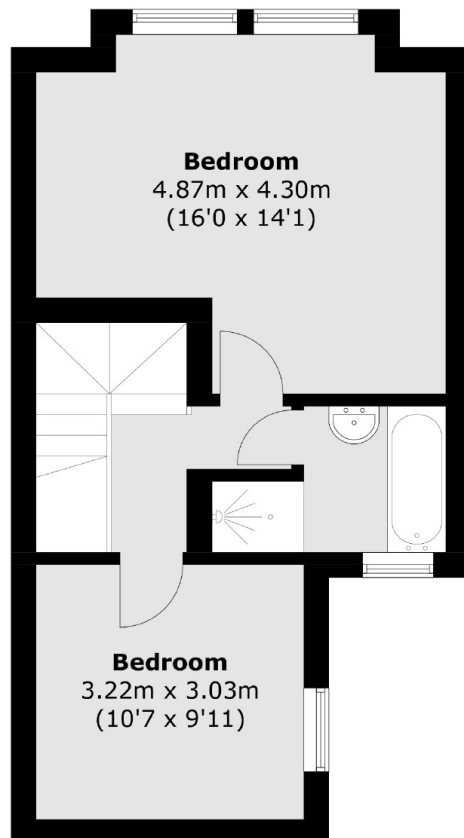
### Features

- Two Double Bedrooms
- Open Plan Reception
- Modern Kitchen
- Wooden Flooring
- Split-Level Flat
- Close To Amenities

# Ostade Road, London, SW2



**First Floor**



**Second Floor**

Total area (approx.): 72.4 sq. m (779.3 sq. ft)