



## Fenwick Place, SW9

£2,900 Per calendar month

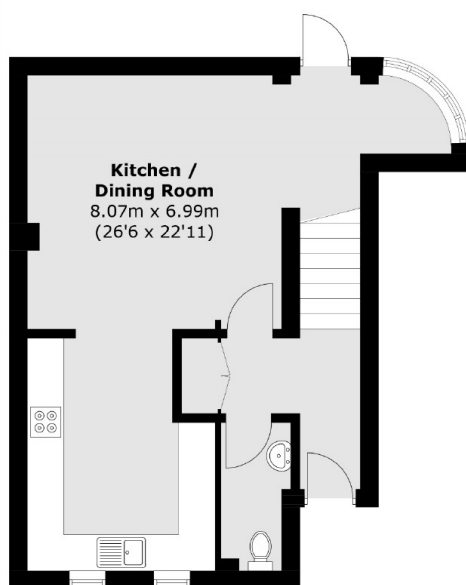
This two bedroom house offers a kitchen with dining area, reception room with balcony, two double bedrooms, a bathroom and a further WC. Also has a private garden and a garage.

Fenwick Place ideally located for easy access to the many restaurants, shops and cafés of central Clapham and Brixton. Clapham North, Stockwell and Brixton stations a short stroll away.

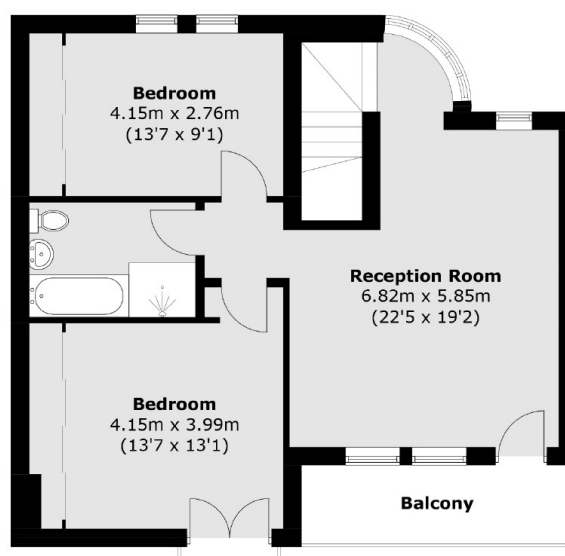
### Features

- Two Double Bedrooms
- Two Floor House
- Modern Interior
- Wooden Flooring
- Private Balcony
- Private Garden

# Fenwick Place, London, SW9



**Ground Floor**



**First Floor**

Total area (approx.): 108.0 sq. m (1,162.5 sq. ft)  
Balcony area (approx.): 5.8 sq. m (62.4 sq. ft)