



St. Luke's Avenue, SW4 £450,000

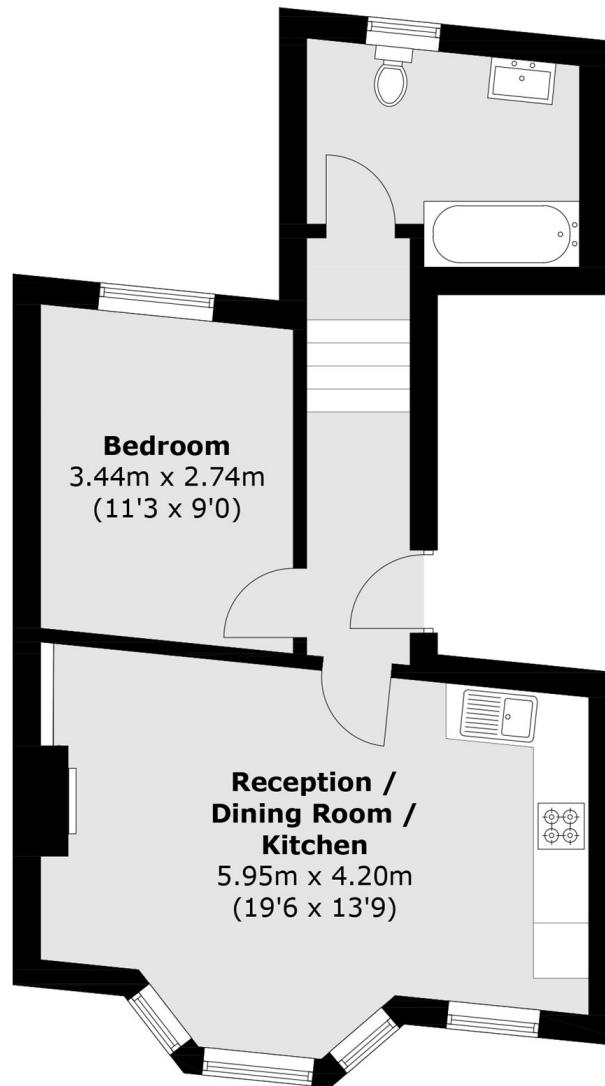
A well presented first floor apartment offering a bright open plan reception with a modern fitted kitchen, double bedroom, and contemporary bathroom. Situated within an attractive period building, this turnkey home provides comfortable living in a sought after location and benefits from a share of the freehold. Offered chain free.

St Lukes Avenue is located just off Clapham High Street, close to Clapham Old Town and Clapham Common with vibrant and bustling cafes, restaurants and bars located just around the corner, and only 0.2 miles from Clapham North and Clapham High (Northern Line).

Features

- Chain Free
- Share of Freehold
- First Floor
- Double Bedroom
- Open Plan Reception

St. Luke's Avenue,
London, SW4



First Floor

Total area (approx.): 44.7 sq. m (481.1 sq. ft)