



Wandsworth Road, SW8

£475,000

Dexters



Wandsworth Road, SW8

A well presented ground floor apartment offering a bright open-plan reception with a modern fitted kitchen, double bedroom, bathroom and private garden. Situated within an attractive Georgian building, this turnkey home provides comfortable living in a sought-after location and benefits from additional storage room. Offered chain-free and with a share of the freehold.

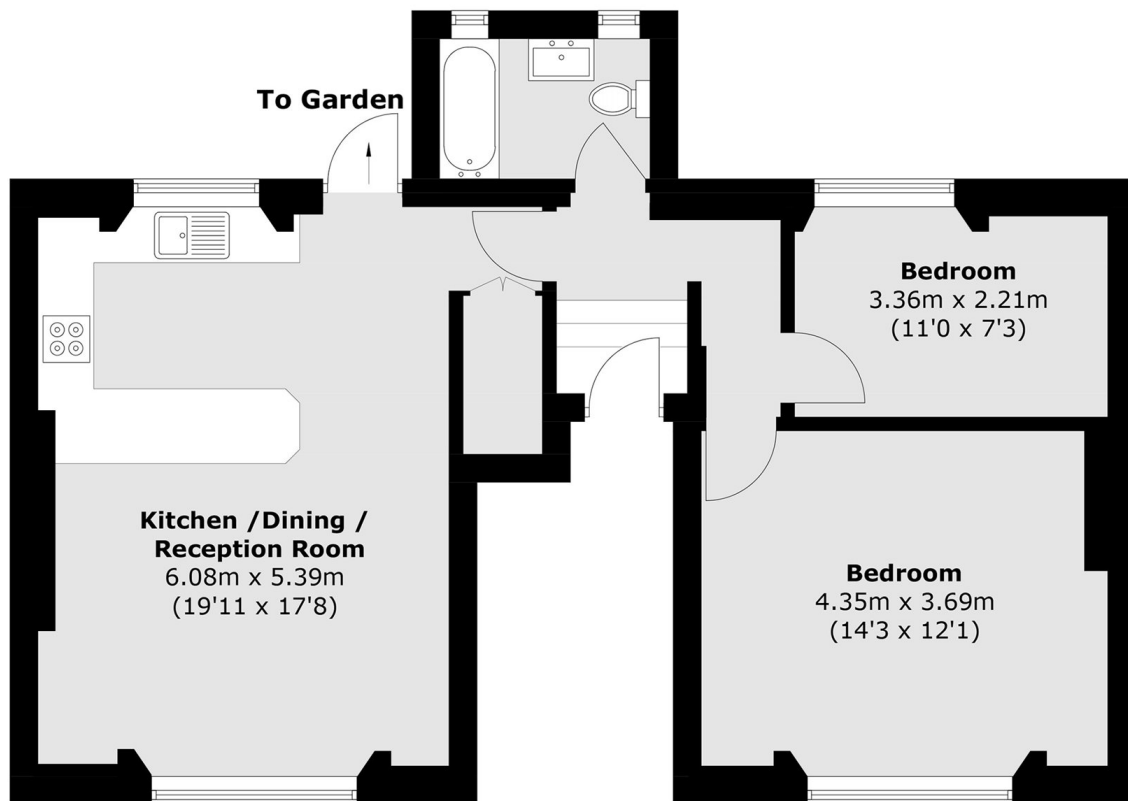
Wandsworth Road is ideally situated next to the beautiful open spaces of Larkhall Park, offering a peaceful green retreat in the heart of the city. Transport links are excellent, with Battersea Power Station Underground, Wandsworth Road Overground, and National Rail services all within easy walking distance, providing swift access across London, including direct routes towards Battersea and beyond.

Features

- Chain Free
- Share of Freehold
- Private Garden
- Open Plan Reception
- Ample Storage



Wandsworth Road, London, SW8



Total area (approx.): 63.7 sq. m (685.6 sq. ft)