



Sidney Road, SW9

£2,600 Per calendar month

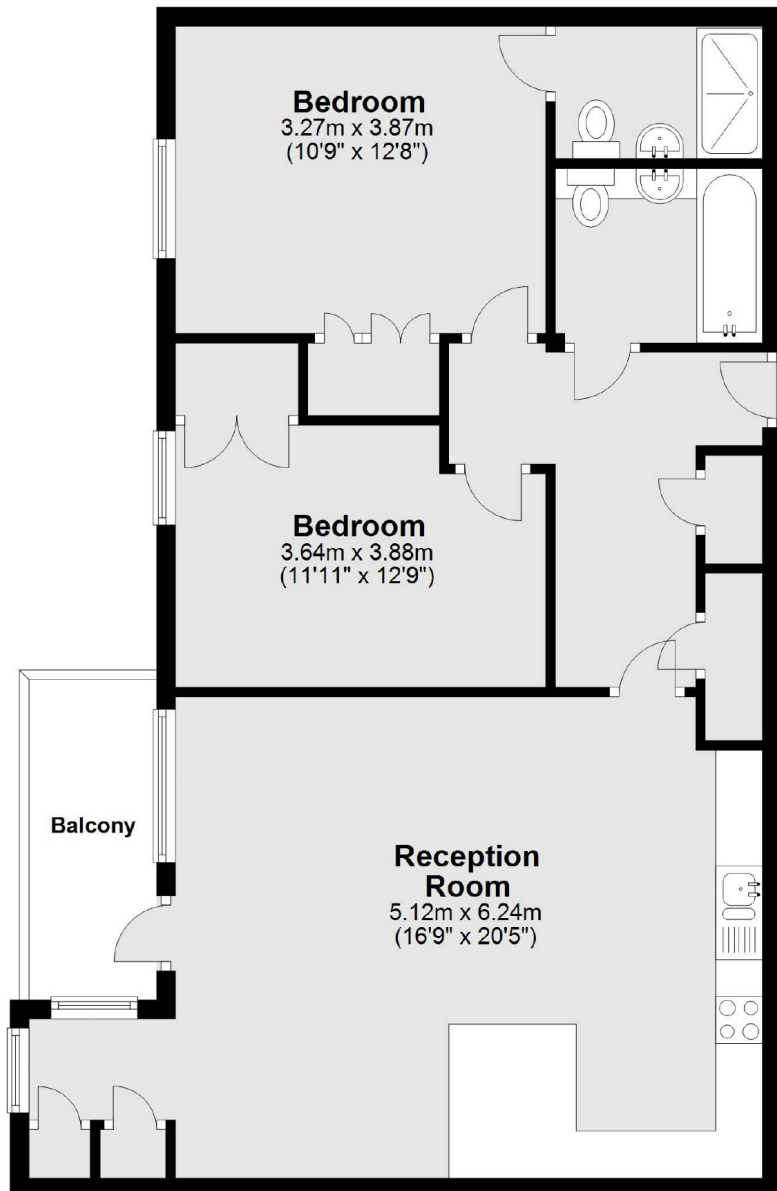
This two double bedroom flat in Stockwell offers spacious living throughout, with an open plan reception room and kitchen, two bathrooms, one of which is an en suite and a private balcony along with access to a communal garden and underground storage.

Located within walking distance to Stockwell and Brixton underground stations. The building is positioned on the south side of Slade Gardens Park.

Features

- Two Double Bedrooms
- Open Plan Reception
- Recently Decorated
- En Suite Bathroom
- Private Balcony
- Locked Bike Storage

Sidney Road,
London, SW9



Main area: Approx. 78.8 sq. metres (847.7 sq. feet)
Plus balconies, approx. 5.1 sq. metres (54.9 sq. feet)

Dexters

Clapham High Street
55 Clapham High Street
London
SW4 7TG
Lettings
020 7483 6364

Energy Rating: B. We aim to make our particulars both accurate and reliable. However they are not guaranteed; nor do they form part of an offer or contract. If you require clarification on any points then please contact us, especially if you're traveling some distance to view. Please note that appliances and heating systems have not been tested and therefore no warranties can be given as to their good working order.

 **RICS** | Regulated
Estate Agent
and Letting Agent

dexters.co.uk