



Tremadoc Road, SW4

£2,200 Per calendar month

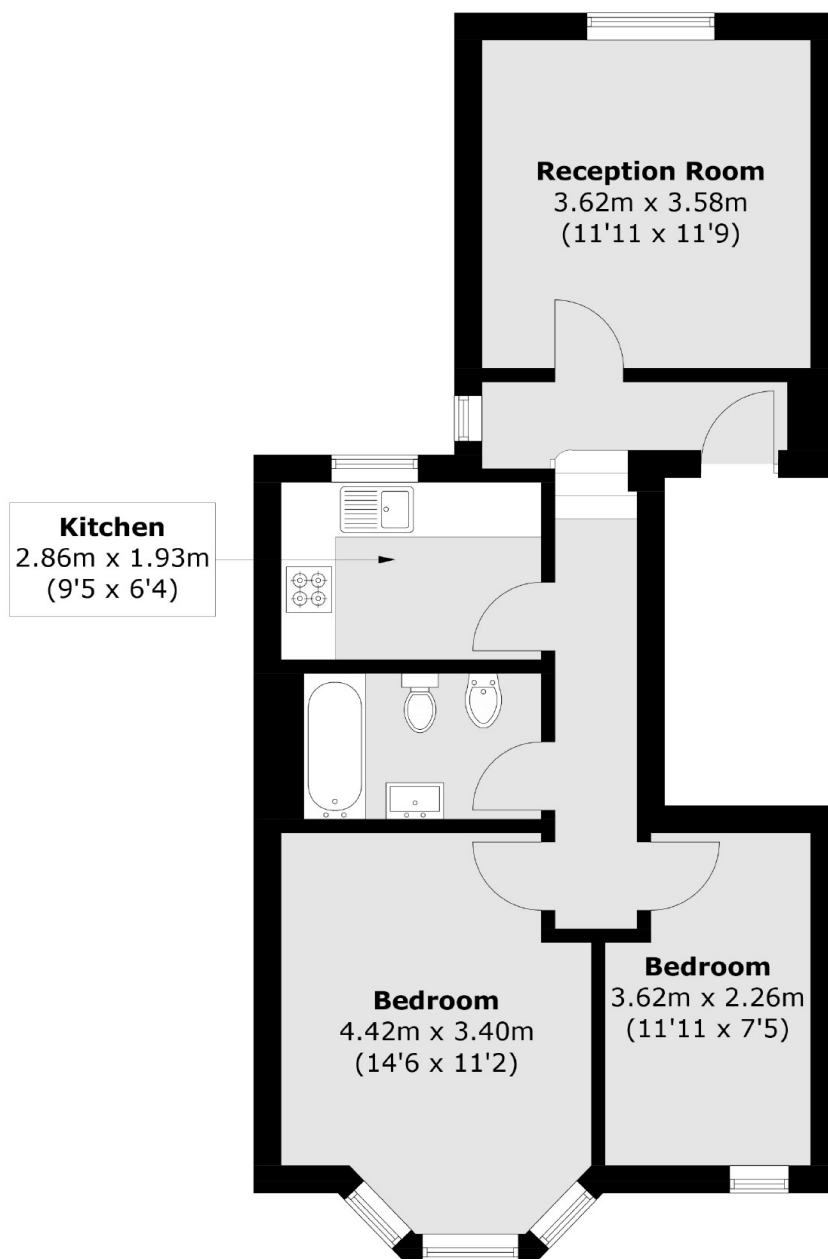
This two double bedroom first floor flat comes equipped with one larger principle bedroom and a smaller double room, suitable for professional sharers with different budgets or a couple looking for more space.

Tremadoc Road offers fantastic access to Clapham High Streets array of restaurants, bars and nightlife as well as having the Picturehouse on Venn Street just round the corner.

Features

- Two Double Bedrooms
- First Floor Flat
- Large Reception Room
- Separate Kitchen
- Prime Location
- Close To Transport

Tremadoc Road, London, SW4



Total area (approx.): 54.3 sq. m (584.4 sq. ft)