



Benedict Road, SW9

£2,200 Per calendar month

An attractive and spacious one double bedroom, one bathroom apartment in a sought-after development in the heart of Brixton. Finished to an extremely high specification throughout with a private balcony.

The property is desirably located in the centre of Brixton, less than half a miles walk from Brixton underground and train station, providing excellent links into central London and the City.

Features

- One Double Bedrooms
- New Build Apartment
- Private Balcony
- Modern Specification
- Wooden Flooring
- Lift Access



Benedict Road, SW9

The development offers well-maintained communal areas with a lift to all floors. The apartment itself provides spacious living accommodation with built-in appliances.

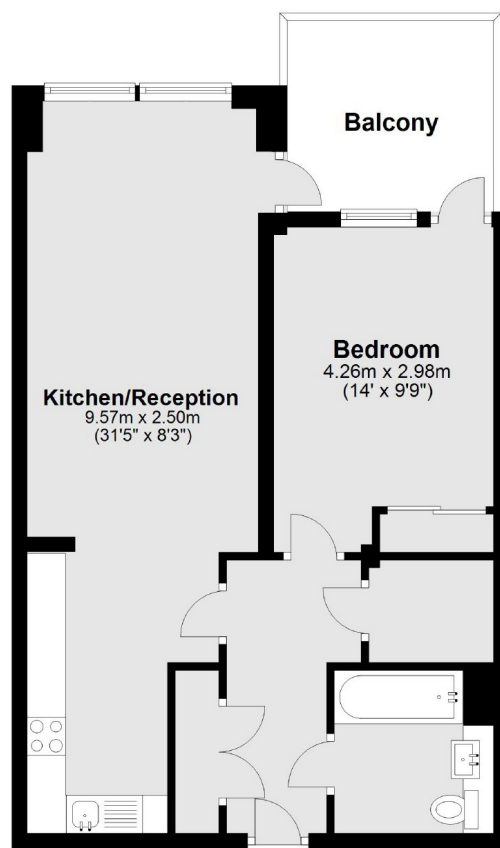
Accommodation provides an exquisite open plan reception/kitchen area with direct access onto a generous private balcony. The flat is complete with underfloor heating throughout.

The building also benefits from secure bike storage, 24 hour CCTV surveillance and a large communal terraces.



Benedict Road, London, SW9

Main area: Approx. 53.6 sq. metres (577.2 sq. feet)
Plus balconies, approx. 6.8 sq. metres (72.7 sq. feet)



Dexters

Clapham High Street
55 Clapham High Street
London
SW4 7TG
Lettings
020 7483 6364

Energy Rating: B. We aim to make our particulars both accurate and reliable. However they are not guaranteed; nor do they form part of an offer or contract. If you require clarification on any points then please contact us, especially if you're traveling some distance to view. Please note that appliances and heating systems have not been tested and therefore no warranties can be given as to their good working order.



[dexters.co.uk](https://www.dexters.co.uk)