



St. Luke's Avenue, SW4

£2,250 Per calendar month

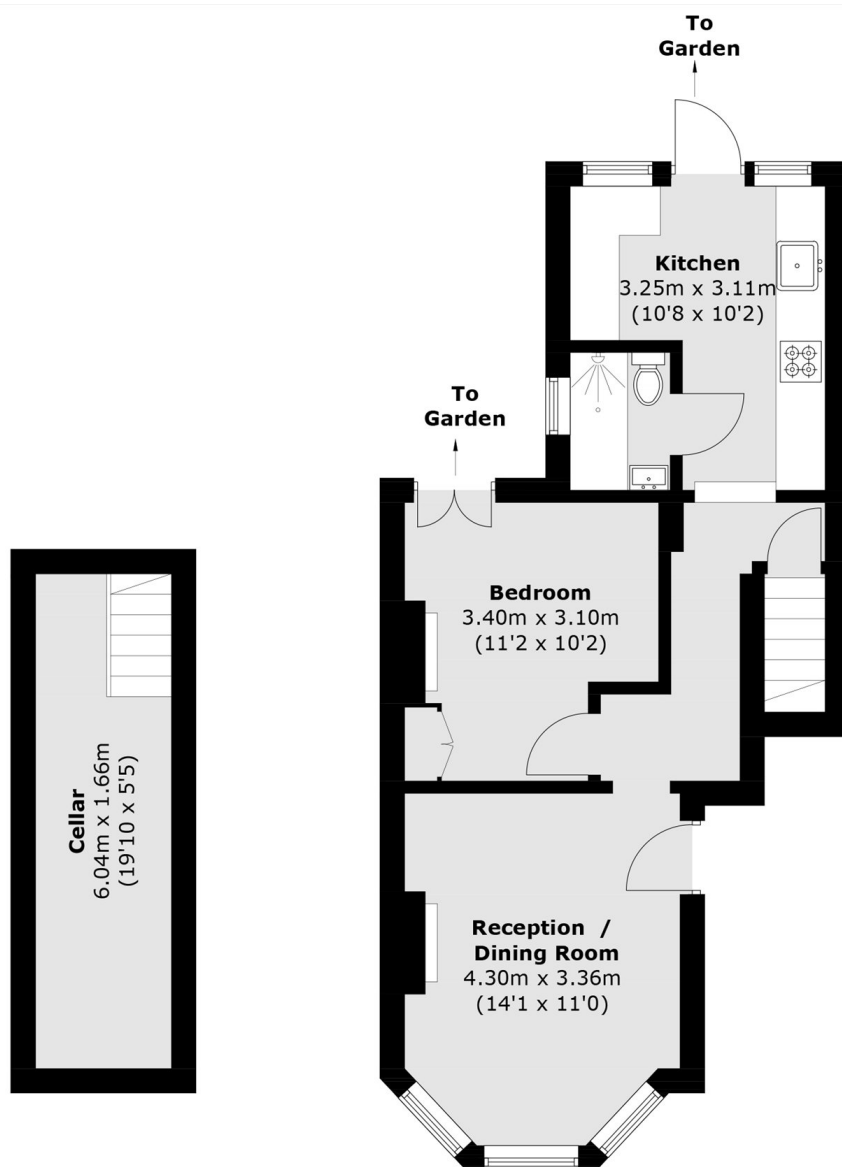
This stylishly presented one bedroom ground floor flat forms part of an attractive Victorian conversion. Offering approximately 583 sq ft of thoughtfully refurbished living space. The property also comes with a private patio garden.

St. Luke's Avenue provides access to the shops, bars and restaurants of Clapham High Street and Clapham Old Town. Clapham Common and two Northern line stations are also very close by.

Features

- Ground Floor Flat
- One Double Bedroom
- Recently Refurbished
- Spacious Reception Room
- Separate Kitchen
- Private Garden

St. Luke's Avenue, London, SW4



Cellar

Ground Floor

Total area (approx.): 52.9 sq. m (569.3 sq. ft)
(Including Cellar)

Dexters

Clapham High Street
55 Clapham High Street
London
SW4 7TG
Lettings
020 7483 6364

Energy Rating: D. We aim to make our particulars both accurate and reliable. However they are not guaranteed; nor do they form part of an offer or contract. If you require clarification on any points then please contact us, especially if you're traveling some distance to view. Please note that appliances and heating systems have not been tested and therefore no warranties can be given as to their good working order.

 **RICS** | Regulated
Estate Agent
and Letting Agent

[dexters.co.uk](https://www.dexters.co.uk)