



Brixton Road, SW9

£350,000

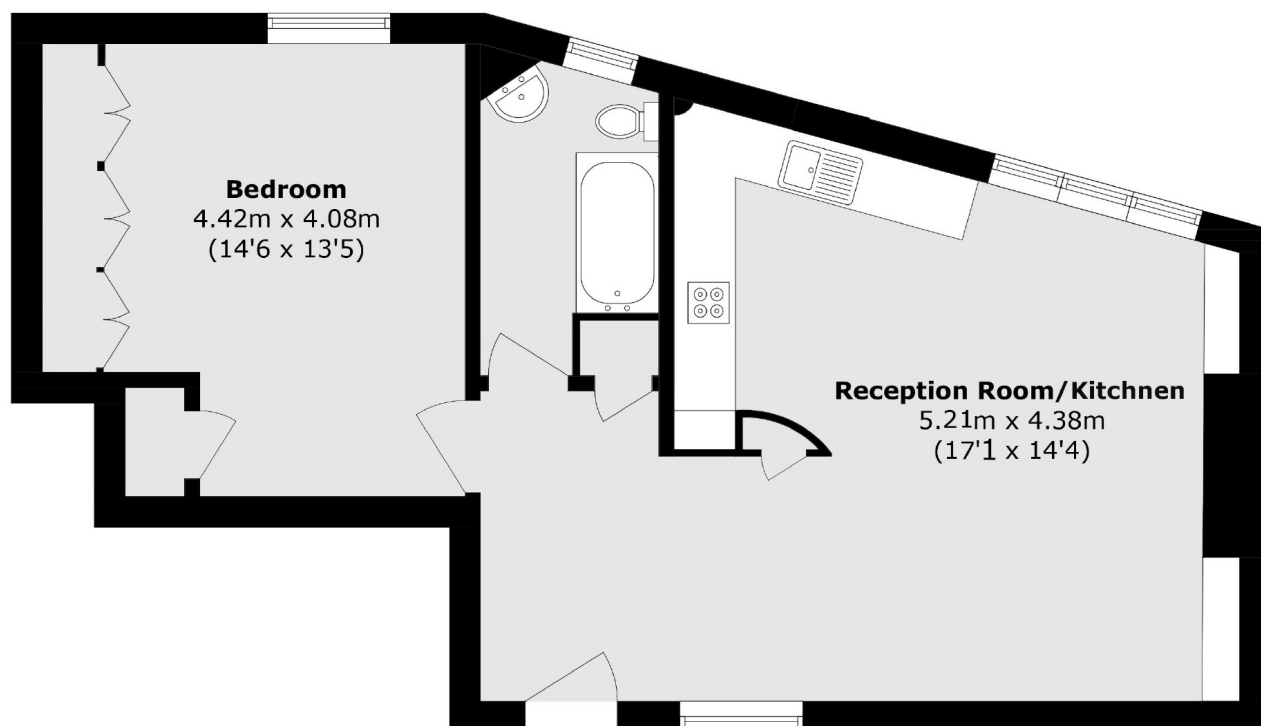
OFFERS IN EXCESS. A well-presented and spacious one-bedroom apartment located on the corner of Canterbury Crescent in the heart of Brixton. The property features a large open-plan kitchen, living, and dining area, a generous double bedroom with fitted storage, and a modern family bathroom. Benefiting from an abundance of natural light and access to shared outdoor space, this superbly located apartment is offered to the market chain-free.

Canterbury Court, situated on the corner of Canterbury Crescent, lies in the very heart of Brixton, offering unparalleled access to the area's vibrant selection of shops, bars, restaurants, and the Underground station (Victoria Line).

Features

- Chain Free
- One Double Bedroom
- Ample Storage
- Shared Outside Space

Brixton Road, London, SW9



Total area (approx.): 57.9 sq. m (623.2 sq. ft)