



**Hanscomb Mews, SW4**  
**£1,050,000**





## Hanscomb Mews, SW4

A rarely available freehold home set within a private gated mews in the desirable Clapham Old Town, benefitting from two off-street parking spaces. This superbly presented property offers beautifully balanced living and entertaining space. On the ground floor, a bright reception room with ample space for dining flows seamlessly into a well-appointed kitchen, complete with a wide range of wall and base units. Both rooms feature sliding doors that open directly onto the private garden, creating an excellent connection between indoors and out. A guest cloakroom completes the ground floor. Upstairs, the first floor provides three bedrooms with fitted wardrobes and two bathrooms. The principal bedroom boasts its own en suite, offering comfort and privacy.

Bromells Road is perfectly located for the wide open spaces of Clapham Common and its Underground station (Northern Line), with Clapham Old Town's many boutique shops, restaurants, bars and gym on your doorstep.

### Features

- Private Mews
- Three Bedrooms
- Two Bathrooms
- Two Parking Spaces
- Garden
- Chain Free





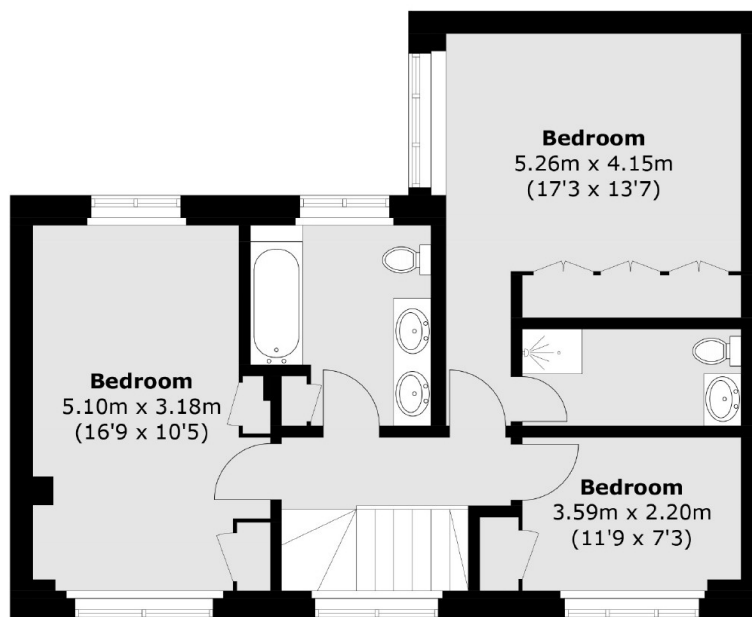




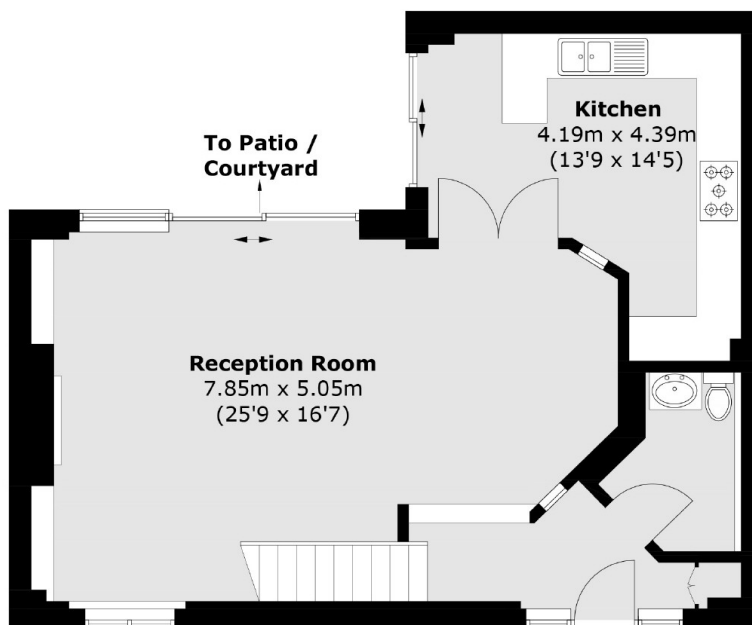




# Hanscomb Mews, London, SW4



**First Floor**



**Ground Floor**

Total area (approx.): 118.4 sq. m (1,274.5 sq. ft)