

## Coldharbour Lane, SW9

### £375,000

A well presented first floor, split level apartment within a period conversion. Boasting two well-proportioned bedrooms, the apartment provides a perfect balance of character and modern living. Ideal for first-time buyers or investors.

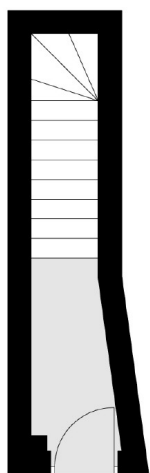
Coldharbour Lane is situated on the doorstep Camberwell and very close to central Brixton, providing excellent access to the area's many shops, bars and restaurants. Brixton Underground (Victoria Line) and Loughborough junction Station provide access to the city. Ruskin Park and Brockwell Park are just around the corner.

### Features

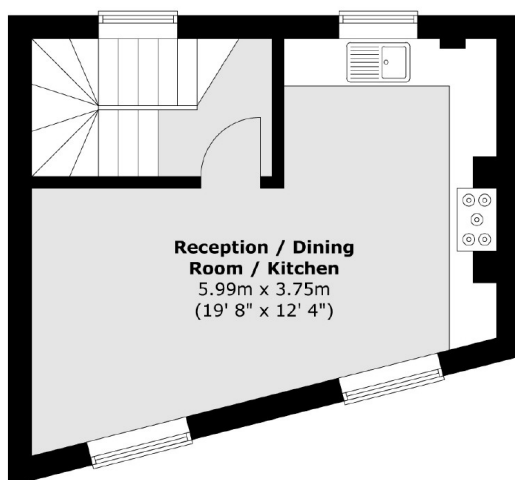
Chain Free  
Two Double Bedrooms  
Split Level  
Period Conversion

# Coldharbour Lane, London, SW9

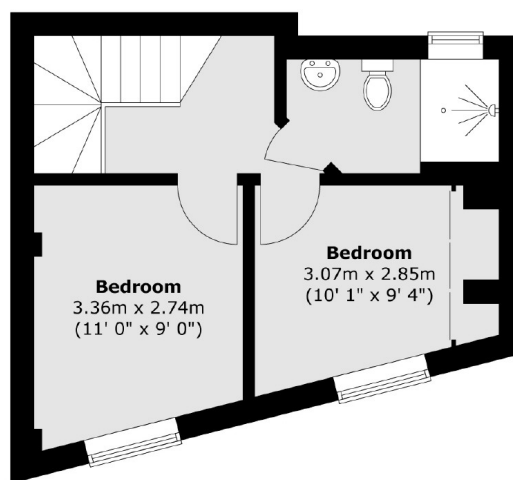
**Ground Floor**



**First Floor**



**Second Floor**



Total area (approx.) : 57.8 sq. m (622 sq. ft)