



Bedford Road, SW4

£525,000

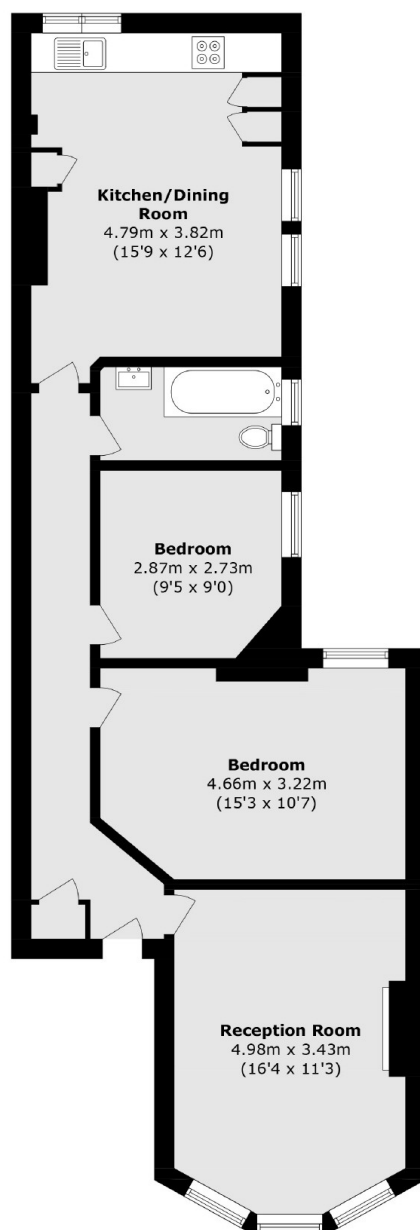
A charming and conveniently located two / three double bedroom first floor apartment. Accommodation includes an open plan kitchen reception with space for dining, two double bedrooms, a three piece bathroom and separate living room, which is currently being used as a bedroom.

Bedford Road is ideally located for the many shops, restaurants and bars of Clapham High Street & Clapham Old Town, along with Clapham North Underground (Northern Line) and Clapham Common.

Features

- Chain Free
- Two / Three Bedrooms
- Convenient Location
- Period Building

Bedford Road, London, SW4



Total area (approx.): 74.6 sq. m (802.9 sq. ft)

Dexters

Clapham High Street
55 Clapham High Street
London
SW4 7TG
Sales
020 7483 6363

Energy Rating: C. We aim to make our particulars both accurate and reliable. However they are not guaranteed; nor do they form part of an offer or contract. If you require clarification on any points then please contact us, especially if you're traveling some distance to view. Please note that appliances and heating systems have not been tested and therefore no warranties can be given as to their good working order.

 **RICS** | Regulated
Estate Agent
and Letting Agent

dexters.co.uk