



**Kimberley Road, SW9**

**£4,750** Per calendar month

**Dexters**





## Kimberley Road, SW9

A beautifully refurbished and extended four double bedroom, three bathroom Victorian home with a private South West facing garden.

The entrance hall opens into a large double reception room with bespoke cabinetry, two fireplaces, a bay window and Crittall style glass doors to divide the two rooms if desired. The hall and the rear reception room both lead to a fully-extended bespoke Roundhouse kitchen diner, complete with ample storage, integrated appliances, an island and access to the low maintenance private garden through glass sliding doors.

The first floor boasts the principal bedroom with a spacious en suite and walk-in wardrobe, a double bedroom and family bathroom. On the top floor there are a further two double bedrooms and a shower room. The loft conversion bedroom is complete with Velux windows and a Juliet balcony boasting stunning sunset views across South West London.

Kimberley Road is a residential street, ideally located for access to the many restaurants, shops and bars of Clapham and Brixton. Clapham North, Stockwell and Brixtons stations are just a stroll away. There are also several excellent schools close by.

### Features

- Victorian Home
- Extended Kitchen
- Four Double Bedrooms
- Three Bathrooms
- High Specification
- Private Garden





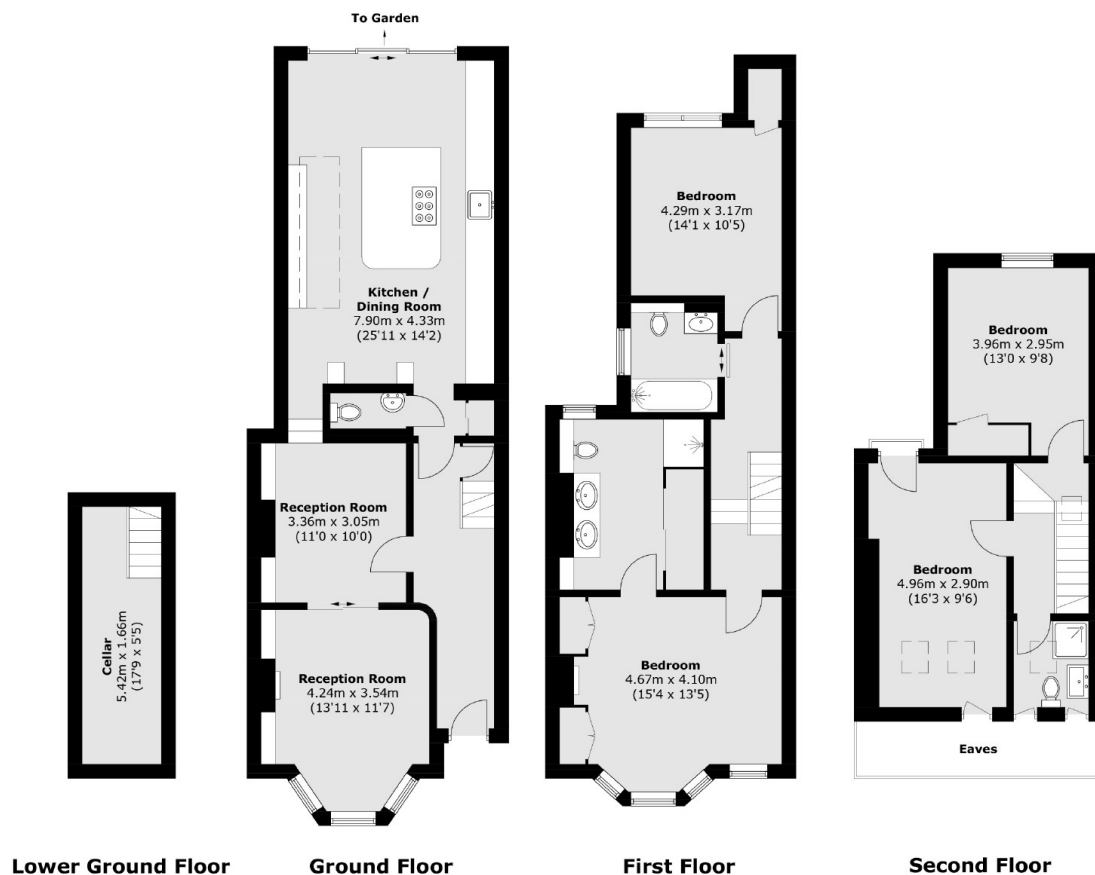








# Kimberley Road, London, SW9



Total area (approx.): 169.8 sq. m (1,827.7 sq. ft)  
(Excluding Eaves)

## Dexters

Clapham High Street  
55 Clapham High Street  
London  
SW4 7TG  
Lettings  
020 7483 6364

Energy Rating: . We aim to make our particulars both accurate and reliable. However they are not guaranteed; nor do they form part of an offer or contract. If you require clarification on any points then please contact us, especially if you're traveling some distance to view. Please note that appliances and heating systems have not been tested and therefore no warranties can be given as to their good working order.

 **RICS** | Regulated  
Estate Agent  
and Letting Agent

[dexters.co.uk](https://www.dexters.co.uk)