



## Herbert Mews, SW2

**£4,500** Per calendar month

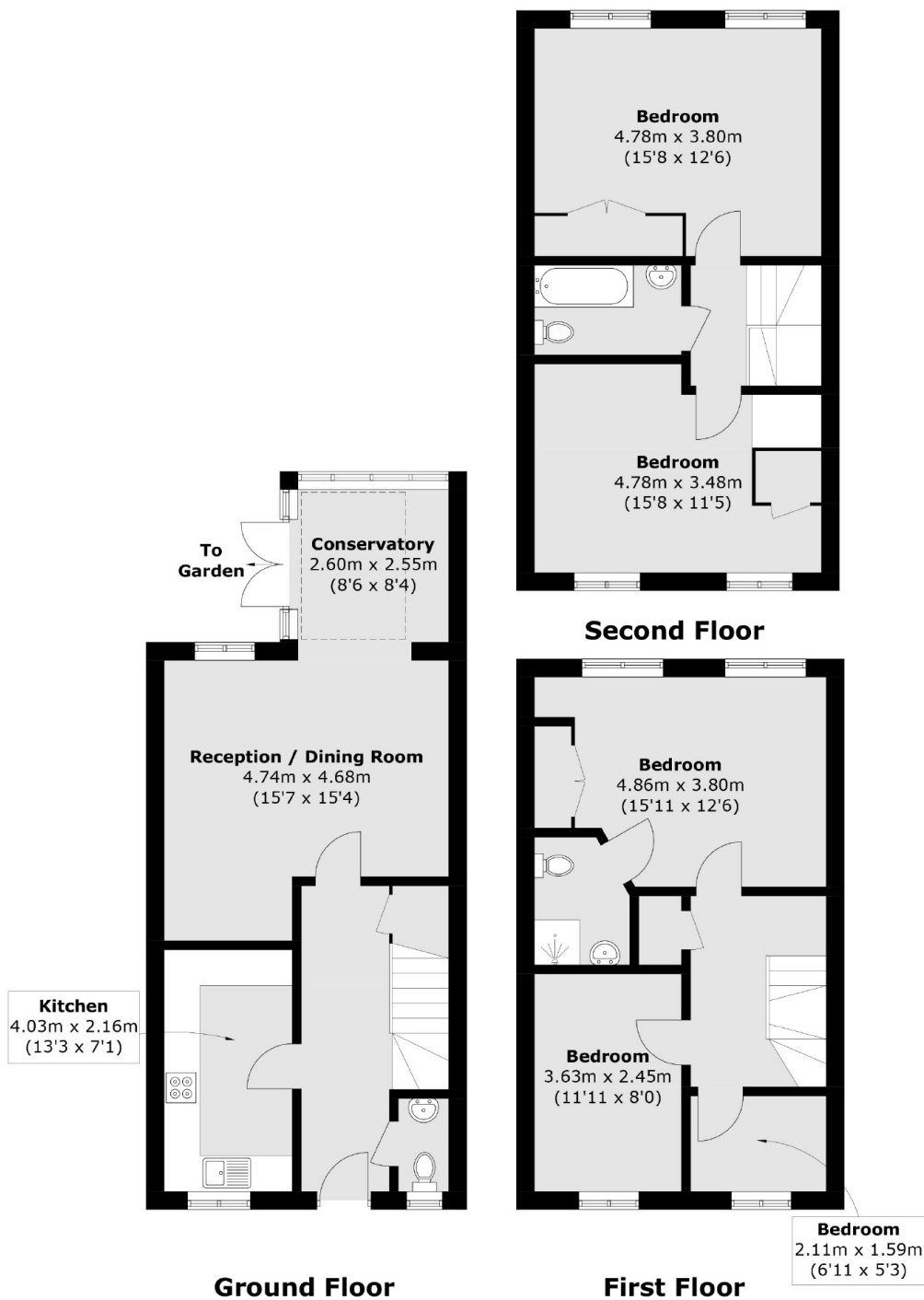
A well-presented four double bedroom townhouse, set within a popular gated development. This spacious property offers four double bedrooms, a further study room, two bathrooms, a WC, a modern fitted kitchen and a large reception room with conservatory leading to a private rear garden.

Located next to Brockwell Park, just moments from a range of shops, bars and restaurants in Brixton. The closest transport links are Brixton station and Tulse Hill overground station.

### Features

- Four Double Bedrooms
- Further Study Room
- Separate Kitchen
- Two Bathrooms
- Gated Development
- Private Garden

# Herbert Mews, London, SW2



Total area (approx.): 134.6 sq. m (1,448.7 sq. ft)

## Dexters

Clapham High Street  
55 Clapham High Street  
London  
SW4 7TG  
Lettings  
020 7483 6364

Energy Rating: . We aim to make our particulars both accurate and reliable. However they are not guaranteed; nor do they form part of an offer or contract. If you require clarification on any points then please contact us, especially if you're traveling some distance to view. Please note that appliances and heating systems have not been tested and therefore no warranties can be given as to their good working order.

 **RICS** | Regulated  
Estate Agent  
and Letting Agent

dexters.co.uk