



**Briarwood Road, SW4**

**£5,250** Per week

**Dexters**



## Briarwood Road, SW4

A four bedroom house, set over three floors in Clapham. Offering a reception room, open plan kitchen with dining room, four double bedrooms, two bathrooms and a private garden. The property is perfect for a family.

The ground floor has a large reception room, separate open plan kitchen with dining space with breakfast bar and French doors leading out to a private landscaped garden with shed.

First floor offers three double bedrooms and a newly tiled bathroom with freestanding bath and walk-in shower.

The top floor comes with a spacious fourth bedroom with built-in storage and en suite.

Briarwood Road is located just moments from the many local shops, restaurants and cafés of Abbeville Village, with Clapham Common's tube station nearby.

### Features

- Four Double Bedrooms
- Period Features
- Two Bathrooms
- Recently Refurbished
- Landscaped Garden
- Prime Location



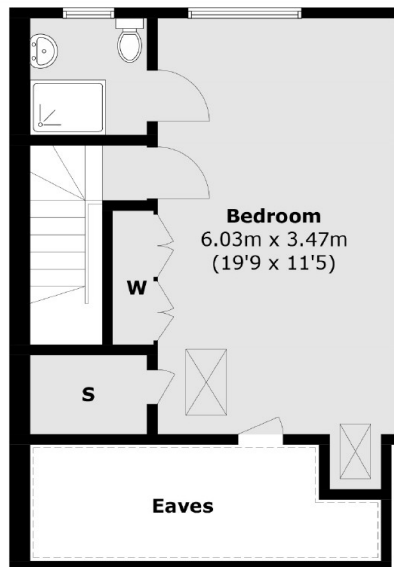




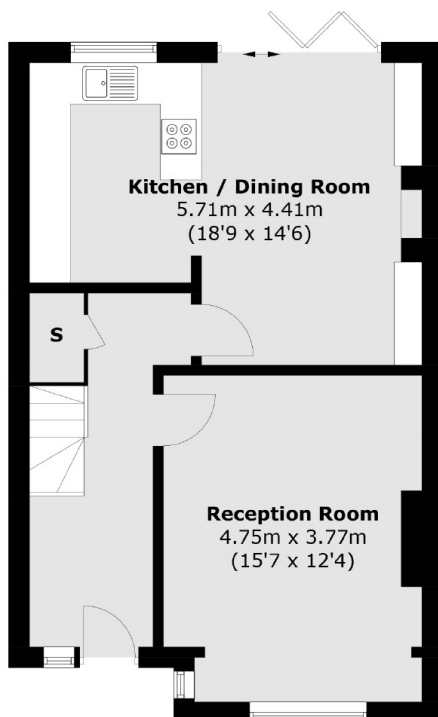




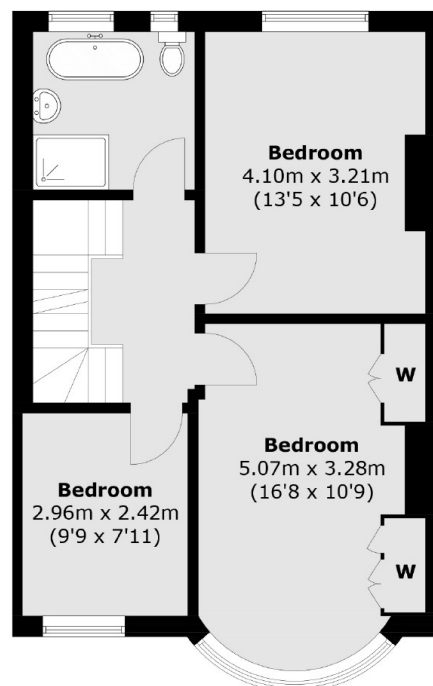
# Briarwood Road, London, SW4



**Second Floor**



**Ground Floor**



**First Floor**

Total area (approx.): 134.7 sq. m (1,449.9 sq. ft)