



Plato Road, SW2

£4,200 Per week

A four bedroom, three bathroom flat in the heart of Brixton. Offering an open plan kitchen, wooden flooring, a roof terrace and a private garden. Perfect for professional sharers.

Situated in between the vibrant hubs of Brixton and Clapham High Street leaving you spoilt for choice for an eclectic mix of restaurants, bars and shops.

Features

- Four Double Bedrooms
- Ground Floor Flat
- Split-Level
- Open Plan Reception
- Private Garden
- Roof Terrace



Plato Road, SW2

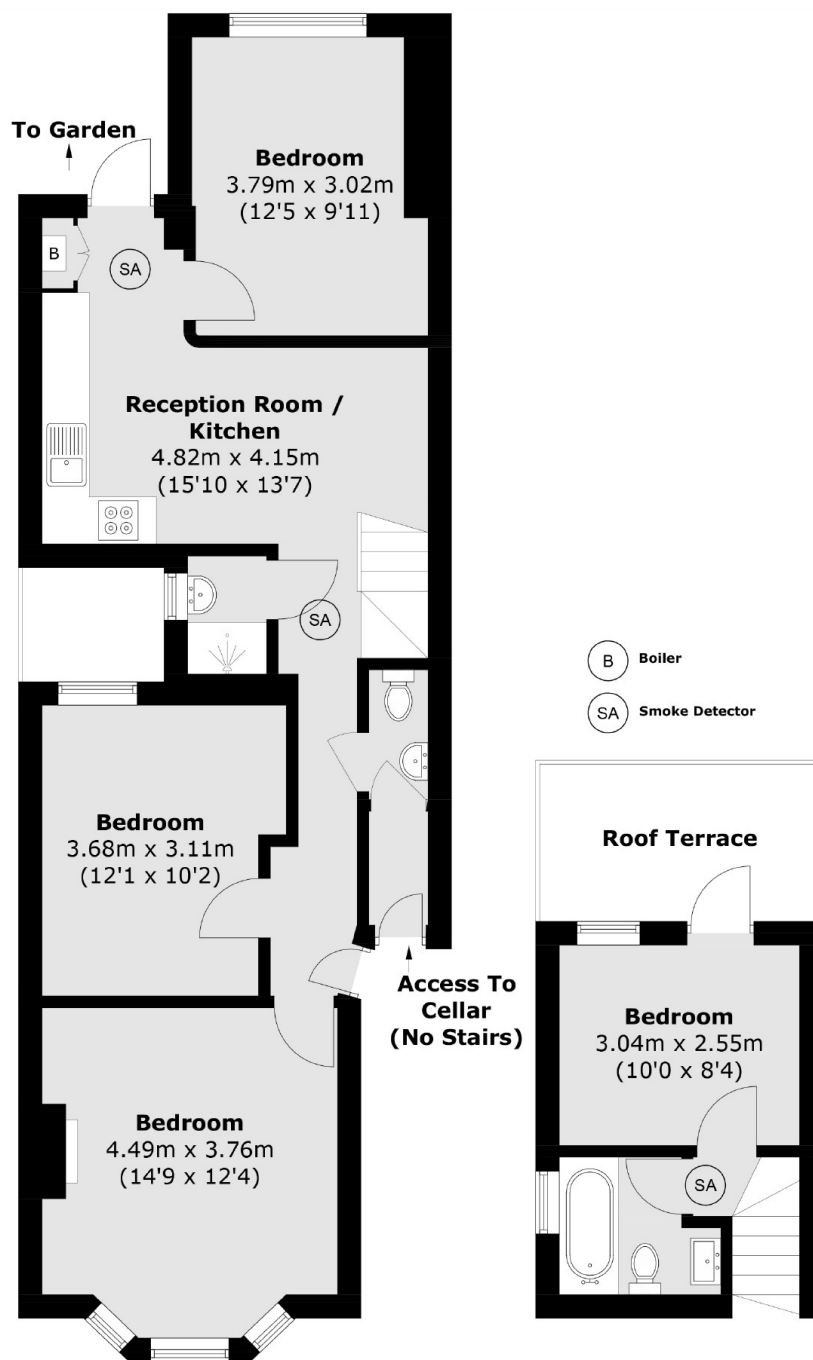
Set over two floors, this modern four bedroom property is ideal for those summer months.

On the ground floor you'll find three double bedrooms, one of which has an en suite bathroom. There us also a downstairs WC, separate shower room, an open plan reception room with a kitchen and access to a private rear garden.

The first floor offers a further double bedroom, family bathroom and access out to a roof terrace.



Plato Road, London, SW2



Ground Floor

First Floor

Total area (approx.): 80.1 sq. m (862.1 sq. ft)
Roof Terrace area (approx.): 7.1 sq. m (76.4 sq. ft)

Dexters

Clapham High Street
55 Clapham High Street
London
SW4 7TG
Lettings
020 7483 6364

Energy Rating: D. We aim to make our particulars both accurate and reliable. However they are not guaranteed; nor do they form part of an offer or contract. If you require clarification on any points then please contact us, especially if you're traveling some distance to view. Please note that appliances and heating systems have not been tested and therefore no warranties can be given as to their good working order.

RICS Regulated
Estate Agent
and Letting Agent

dexters.co.uk