



Mordaunt Street, SW9

£2,200 Per week

This ground floor period conversion includes a large reception room, an adjoining kitchen, two double bedrooms and a bathroom. There is a private garden that can be used as off street parking.

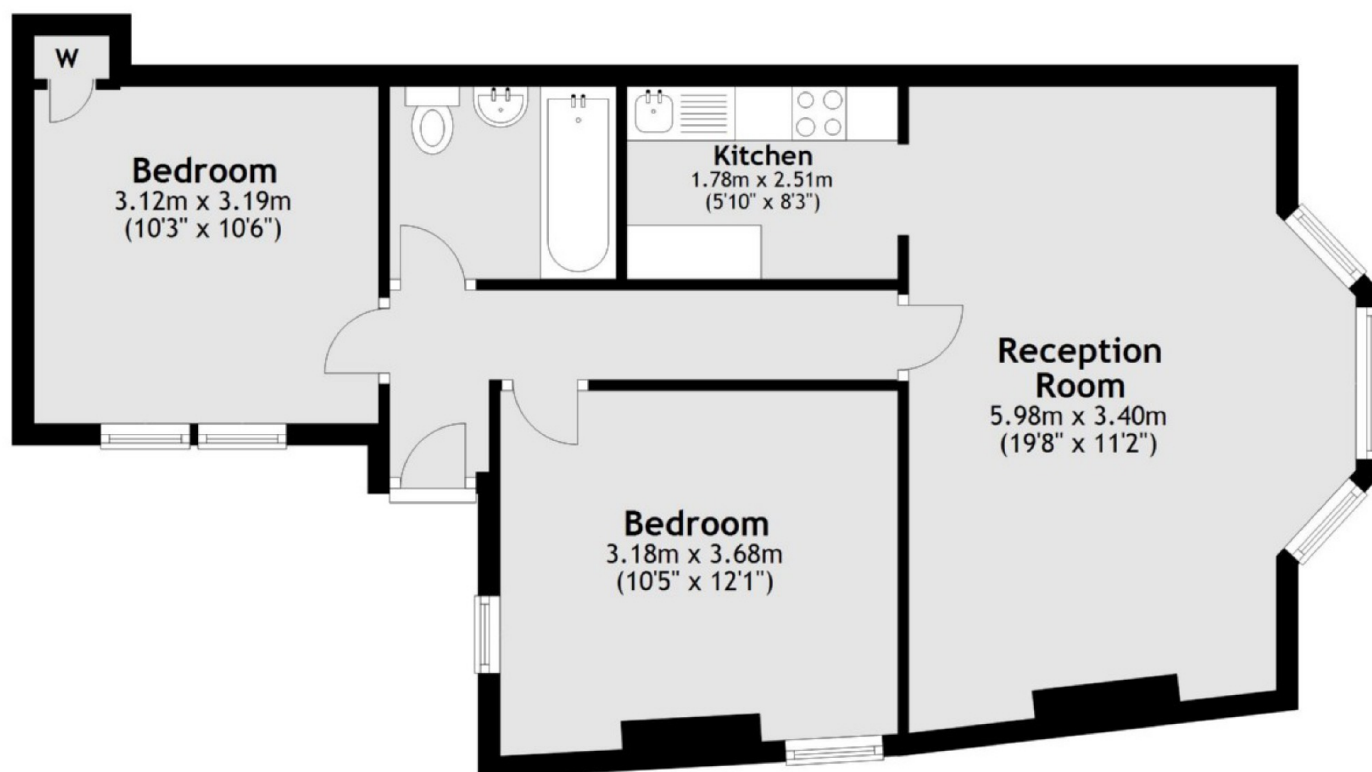
Mourdanut Street is a tree lined residential street off Landor Road, nestled between Stockwell, Brixton and Clapham North Underground Stations (Northern and Victoria Lines).

Features

Period Conversion
Ground Floor Flat
Large Reception Room
Wooden Flooring
Private Garden
Close To Transport

Mordaunt Street, London, SW9

Ground Floor



Total area: approx. 58.7 sq. metres (631.6 sq. feet)