



Littlebury Road, SW4

£4,500 Per week

This large split level, four double bedroom flat just off Clapham High Street, offers a spacious open plan reception room with kitchen and two bathrooms. Ideal for professional sharers.

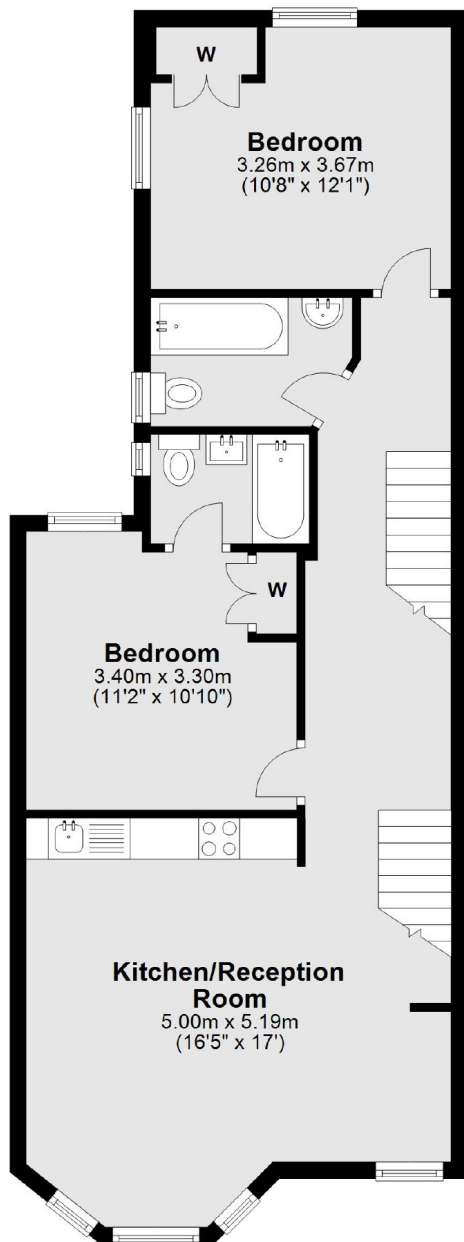
Just off the High Street, less than half a mile from the Common and with great City connections, this apartment an ideal location for professionals.

Features

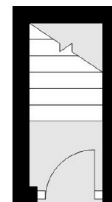
- Four Double Bedrooms
- Open Plan Reception
- Split Level
- Two Bathrooms
- Close To Amenities
- Close To Tube

Littlebury Road, London, SW4

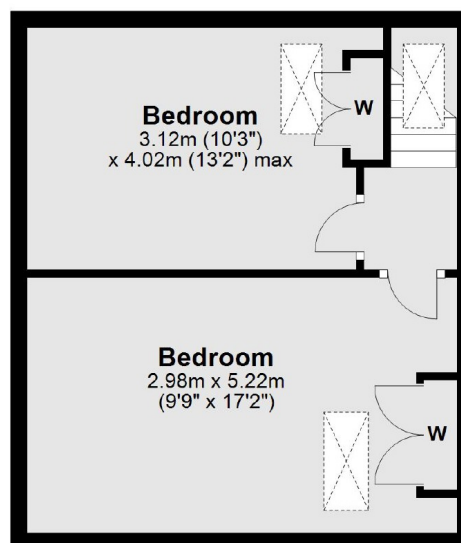
First Floor



Ground Floor



Second Floor



Total area: approx. 98.6 sq. metres (1060.9 sq. feet)