



Josephine Avenue, SW2

£3,500 Per calendar month

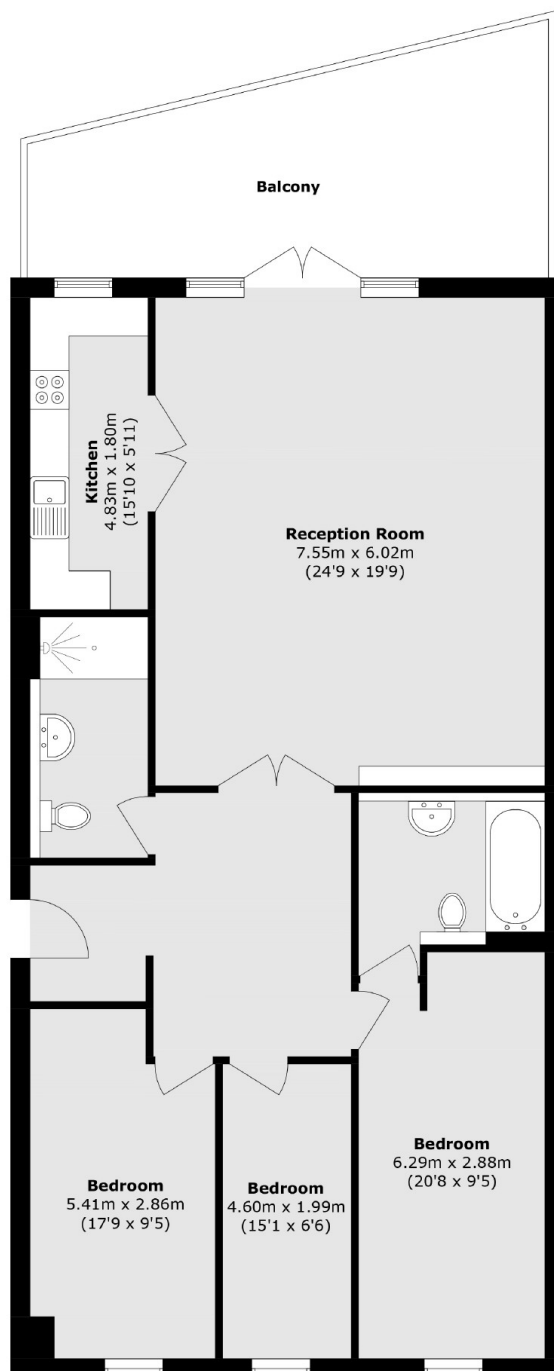
Set within a secure gated development, this three bedroom flat offers a open plan kitchen / reception room, two bathrooms, a private balcony and one allocated parking space. This flat is ideal for professional sharers.

Located just over half a miles walk to Brixton Village's shops, bars and restaurants, as well as Brixton Station which offers both overground and underground.

Features

- Three Double Bedrooms
- Gated Development
- Open Plan Reception
- Two Bathrooms
- Private Balcony
- Allocated Parking

Josephine Avenue, London, SW2



Total area (approx.): 130.4 sq. m (1403.6 sq. ft)

Total area (approx.): 24.4 sq. m (262.6 sq. ft)

Dexters

Clapham High Street
55 Clapham High Street
London
SW4 7TG
Lettings
020 7483 6364

Energy Rating: . We aim to make our particulars both accurate and reliable. However they are not guaranteed; nor do they form part of an offer or contract. If you require clarification on any points then please contact us, especially if you're traveling some distance to view. Please note that appliances and heating systems have not been tested and therefore no warranties can be given as to their good working order.

 **RICS** | Regulated
Estate Agent
and Letting Agent

[dexters.co.uk](https://www.dexters.co.uk)