



## Beechdale Road, SW2

£2,300 Per calendar month

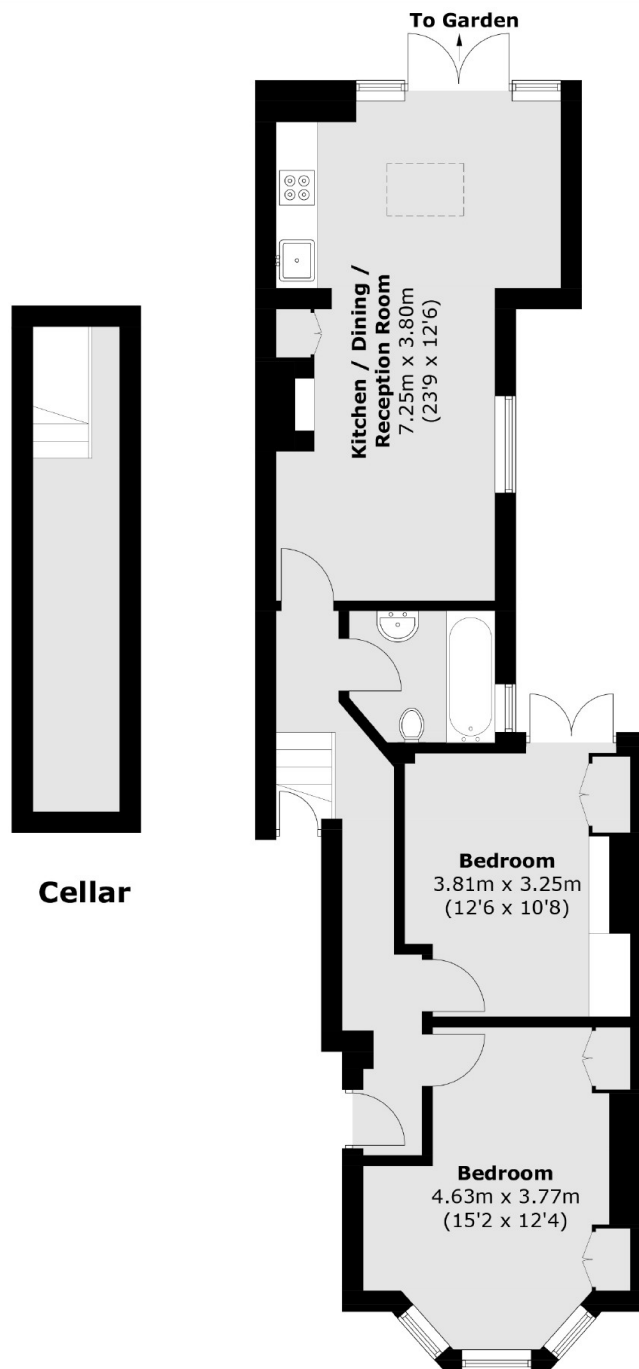
A spacious ground floor garden flat in Brixton, offering a large open plan reception room and kitchen with dining, two double bedrooms, bathroom, wooden flooring and private decked garden.

Set on a residential road just off Brixton Hill, with transport links to the city as well as Brixton Village, with its eclectic mix of bars and restaurants.

### Features

- Two Double Bedrooms
- Ground Floor Flat
- Modern Kitchen
- Large Reception Room
- Wooden Flooring
- Private Garden

# Beechdale Road, London, SW2



## Ground Floor

Total area (approx.): 66.4 sq. m (714.7 sq. ft)  
Cellar (approx.): 8.7 sq. m (93.6 sq. ft)

# Dexters

Clapham High Street  
55 Clapham High Street  
London  
SW4 7TG  
Lettings  
020 7483 6364

Energy Rating: C. We aim to make our particulars both accurate and reliable. However they are not guaranteed; nor do they form part of an offer or contract. If you require clarification on any points then please contact us, especially if you're traveling some distance to view. Please note that appliances and heating systems have not been tested and therefore no warranties can be given as to their good working order.

 **RICS** | Regulated  
Estate Agent  
and Letting Agent

[dexters.co.uk](https://www.dexters.co.uk)