



## Carpenters Place, SW4

£3,500 Per calendar month

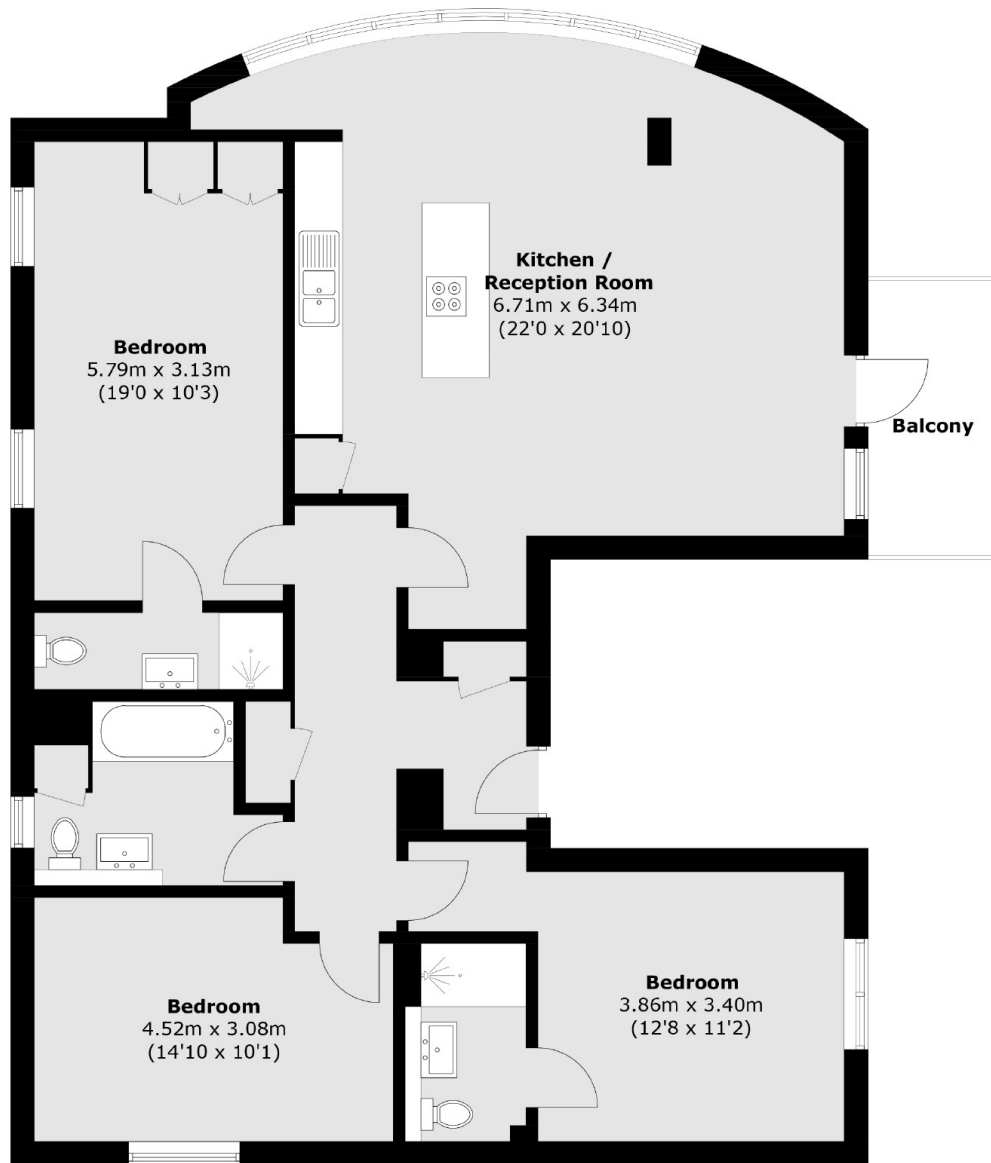
A modern and spacious three double bedroom, three bathroom apartment in Carpenters Place. Set on the second floor, this property is tucked away just off Clapham High Street in a secure development.

Carpenters Place is located just off Clapham High Street which is renowned for its many bars, restaurants and coffee shops, with exceptional transport links into the City via Clapham Common and Clapham North stations.

### Features

- Three Double Bedrooms
- Open Plan Reception
- Modern Kitchen
- High Specification
- Private Roof Terrace
- Prime Location

# Carpenters Place, London, SW4



## Second Floor

Total area (approx.): 120.2 sq. m (1293.8 sq. ft)  
Balcony : 5.7 sq. m (61.3 sq. ft)

# Dexters

Clapham High Street  
55 Clapham High Street  
London  
SW4 7TG  
Lettings  
020 7483 6364

Energy Rating: . We aim to make our particulars both accurate and reliable. However they are not guaranteed; nor do they form part of an offer or contract. If you require clarification on any points then please contact us, especially if you're traveling some distance to view. Please note that appliances and heating systems have not been tested and therefore no warranties can be given as to their good working order.

 **RICS** | Regulated  
Estate Agent  
and Letting Agent

[dexters.co.uk](https://www.dexters.co.uk)