



Lyham Road, SW2

£2,500 Per week

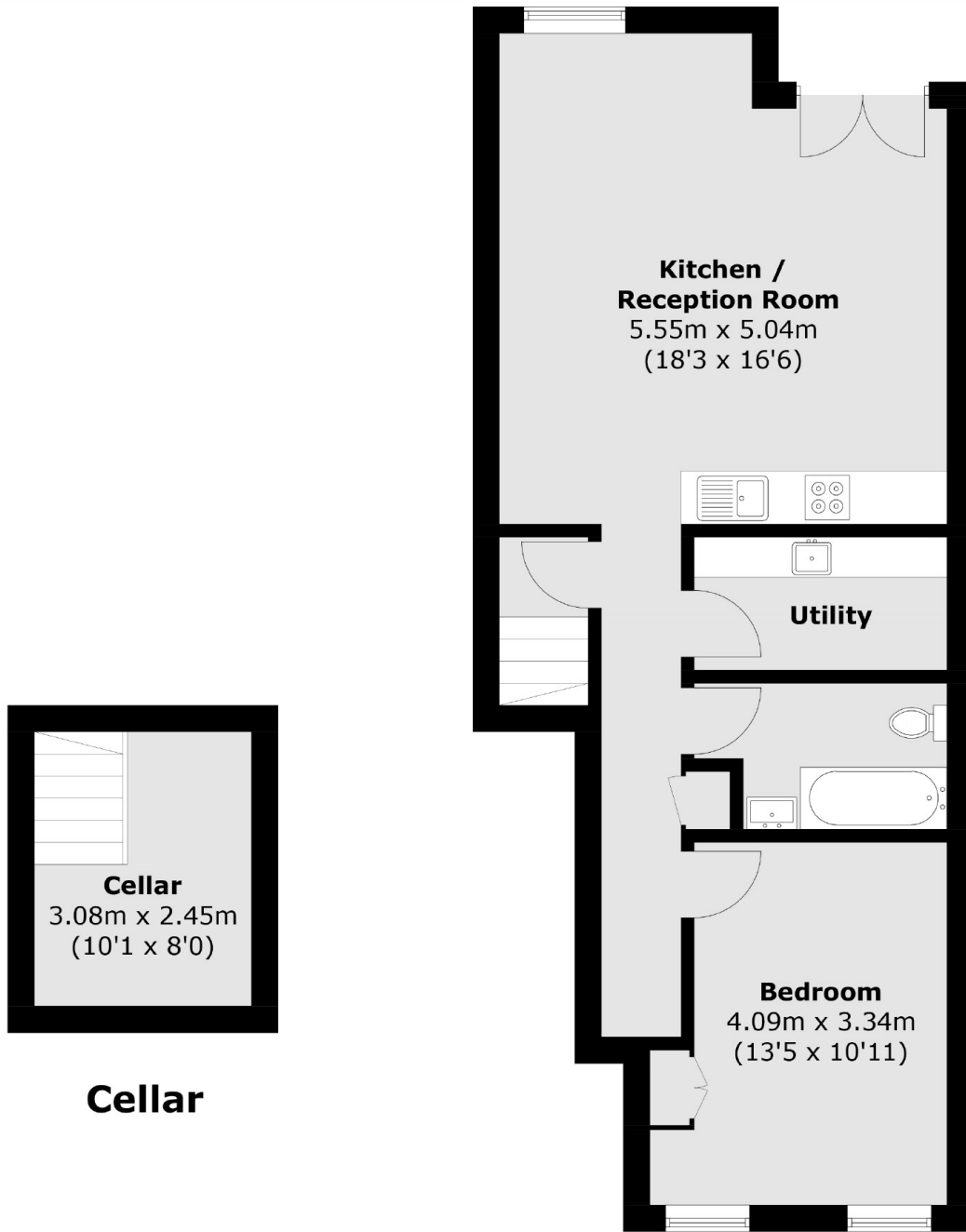
An attractive ground floor flat, offering one double bedroom, a spacious open plan reception room and kitchen with access out to a private patio garden. All finished to a high specification.

With easy access to Acre Lane, Brixton Town Centre and Clapham High Street, Lyham Road is a firm favourite of young sharers who need local amenities on their doorstep.

Features

- One Double Bedroom
- Ground Floor Flat
- Modern Finish
- Open Plan Reception
- Wooden Flooring
- Large Patio Garden

**Lyham Road,
London, SW2**



Ground Floor

Total area (approx.): 65.3 sq. m (702.9 sq. ft)
(Including Cellar)

Dexters

Clapham High Street
55 Clapham High Street
London
SW4 7TG
Lettings
020 7483 6364

Energy Rating: C. We aim to make our particulars both accurate and reliable. However they are not guaranteed; nor do they form part of an offer or contract. If you require clarification on any points then please contact us, especially if you're traveling some distance to view. Please note that appliances and heating systems have not been tested and therefore no warranties can be given as to their good working order.

RICS | Regulated
Estate Agent
and Letting Agent

[dexters.co.uk](https://www.dexters.co.uk)